

Issue : June 2025

# NEWS & UPDATES

## SUPPORTED BY



Ministry of Steel | Ministry of Coal  
Ministry of Mines | Ministry of Heavy Industries\*  
Ministry of Micro, Small & Medium Enterprises\*  
**GOVERNMENT OF INDIA**



Coal India Limited  
(A Maharatna Company)



सेल SAIL  
Steel Authority of  
India Limited



सीएसआईआर  
CSIR  
भारत का नवाचार इंजन  
The Innovation Engine of India

\*Requested



A Part of IME 2025

**2<sup>nd</sup> International Metal Exhibition**

**Oct. 30<sup>th</sup> - Nov. 2<sup>nd</sup>, 2025**

**Science City Ground & Biswa Bangla Mela Prangan  
Kolkata, India**

*Concurrent with International Metal Conference (IMC)*



**SCAN QR CODE  
TO ENQUIRE FOR EXHIBITING**

**ADVANTAGE  
INDIA**

## A Gateway for Business Expansion

### Industry Support



**aiia**  
All India Association of Industries



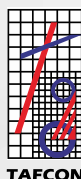
### Platinum Sponsor

**Mobil**<sup>TM</sup>

### Silver Sponsor

**FLENDER**

### ORGANISED BY



### Co-Located with



**Biswa Bangla Mela Prangan  
& Science City Ground**

**Expected Participation  
(ISME + IME 2025)**

**1,000+** Exhibitors

**9+** Pavilions

**34+** Countries

**34,000+** Footfalls

[www.steelandmetallurgyexpo.com](http://www.steelandmetallurgyexpo.com)



### Chairman

International Steering Committee

### Shri G. Kishan Reddy

Hon'ble Minister  
Ministry of Coal & Mines  
Government of India



### Co-Chairman

International Steering Committee

### Shri Satish Chandra Dubey

Hon'ble Minister of State  
Ministry of Coal & Mines  
Government of India

### PATRON



**Vikram Dev Dutt, IAS**  
Secretary  
Ministry of Coal  
Government of India

### PATRON



**V.L. Kantha Rao, IAS**  
Secretary  
Ministry of Mines  
Government of India

### PATRON



**Sandeep Poundrik, IAS**  
Secretary  
Ministry of Steel  
Government of India

### PATRON



**Dr. N. Kalaiselvi**  
Director General, CSIR  
& Secretary DSIR  
Government of India

### Chairman, National Advisory Committee



**P.M. Prasad**  
CMD, Coal India

### President MGMI



**J.P. Dwivedi**  
CMD, Western Coalfields

### Chairman IME 2025



**B. Sairam**  
CMD, Northern Coalfields

### Chairman AMC 2025



**Uday R. Kaole**  
CMD, Mahanadi Coalfields

### Members - National Advisory Committee



**Amarendu Prakash**  
Chairman, SAIL



**Dr. Ranjit Rath**  
CMD, Oil India



**Prasanna K. Motupalli**  
CMD, NLC India



**Shantanu Roy**  
CMD, BEML



**Ajit Kumar Saxena**  
CMD, MOIL



**Brijendra Pratap Singh**  
CMD, NALCO



**A.K. Satpati**  
CMD, UCIL

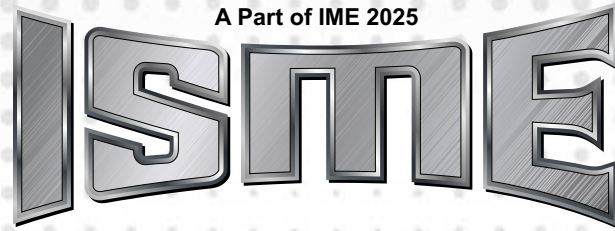


**I.D. Narayan**  
CMD, MECL



**Sanjiv Kumar Singh**  
CMD, HCL





**2<sup>nd</sup> International Metal Exhibition**

*Concurrent with International Metal Conference (IMC)*

&



**11<sup>th</sup> International Mining, Equipment  
& Minerals Exhibition**

*(Concurrent with 11<sup>th</sup> Asian Mining Congress)*

**Partial List of Participants (ISME + IME) - 412 Exhibitors  
(as on July 08, 2025)**

**79%  
BOOKED**

# India's Largest & Prestigious Mining Exhibition

## Book Today

### SUPPORTED BY



सत्यमेव जयते  
Ministry of Coal  
Ministry of Mines  
Ministry of Steel  
Government of India



Coal India Limited  
(A Maharatna Company)



सेल SAIL



सीएसआईआर  
CSIR  
भारत को नवाचार इंजन  
The Innovation Engine of India

11<sup>th</sup>  
Edition



### ORGANISED BY



TAFCON



MGMI

## International Mining, Equipment & Minerals Exhibition

Oct. 30<sup>th</sup> - Nov. 2<sup>nd</sup>, 2025 | Kolkata, India

Biswa Bangla Mela Prangan & Science City Ground

Concurrent with 11<sup>th</sup> Asian Mining Congress

SCAN QR CODE  
TO DOWNLOAD NEWSLETTER



[www.miningexpoindia.com](http://www.miningexpoindia.com)

79%  
BOOKED

Co-located Show

A Part of IME 2025

# ISME

International Metal Exhibition & Conference

Expected  
Participation:

1,000+

Exhibitors

9+

Pavilions

34+

Countries

34,000+

Footfalls

### INDUSTRY SUPPORT

AUSTRALIA



AUSTRALIA

PARTNER COUNTRIES  
RUSSIA



MINISTRY OF INDUSTRY  
AND TRADE RUSSIA



MINISTRY OF ENERGY  
OF THE RUSSIAN FEDERATION

GERMANY



VDMA  
Mining & Minerals

CHINA PAVILION  
BY



西麦克展览  
CMECEXPO

INDIAN



Indrag



AIIFA  
All India Association of Industries

PLATINUM SPONSOR

Mobil™

GOLD SPONSOR

JMS

SILVER SPONSOR

FLENDER

VISITOR BADGES &  
LANYARD SPONSOR

MAHA MASCOT LIVES

For Stall Booking & Enquiries, Contact at [miningexpo@tafcon.in](mailto:miningexpo@tafcon.in), +91-11-49857777

## Partial List of Participants (ISME + IME) - 412 Exhibitors as on July 08, 2025

- AARNESH AIR PRODUCTS PVT. LTD.
- ABS INSTRUMENTS PRIVATE LIMITED
- Aereo
- AEROSCAN TECHNOLOGY
- African Mining Market
- AGARWAL EARTHMOVING SPARES COMPANY
- AIMIL LTD
- AKHAND HYPERMEC PVT. LTD.
- All India Association of Industries
- AMETEK INSTRUMENTS INDIA PVT. LTD.
- ANAND SEALING SOLUTIONS PVT LTD
- Andritz Technologies Private Limited
- Applied Engineering Services
- AQUA MACHINERIES PRIVATE LIMITED
- Aquatech Pumping Solutions
- ARDEE HI-TECH PRIVATE LIMITED
- Arm & Hammer Forgings Private Limited
- ARUL POLYMERS PVT LTD
- Australian Pavilion by Australian Trade and Investment Commission (30 companies)
- Australian Trade and Investment Commission
- AUTOMATION CONTROLS
- BALKRISHNA INDUSTRIES LTD.
- BALMER LAWRIE AND COMPANY LIMITED
- BAUER Equipment
- Beckhoff Automation Pvt. Ltd.
- BEDMUTHA INDUSTRIES LIMITED
- BEML LIMITED
- BHARAT DRILLING COMPANY
- BHARAT WIRE ROPES LIMITED
- BROIL SENSOTEK INDUSTRIES
- BSAS INDIA
- BTL EPC LIMITED
- Buildcon Media
- Carborundum Universal Limited
- Cavotec
- CBC INDIA
- CBS TECHNOLOGIES PVT LTD
- Ceat Tyres
- CENLUB INDUSTRIES LIMITED
- CHAMPION SEALS INDIA PRIVATE LIMITED
- CHANDERPUR WORKS PVT. LTD.
- China Pavilion by CMEC International Exhibition Co. Ltd. (about 30 Companies)
- CMEC International Exhibition Co. Ltd.
- Coalexpert And Solution
- Construction Mirror
- Construction Technology Today
- Construction Times
- CONTINENTAL CONVEYORS PVT. LTD.
- Cosmo World
- COSMOS PUMPS PVT LTD
- CRC INDIA MANUFACTURING & DISTRIBUTORS PVT. LTD.
- CTC IMPEX (INDIA) PVT. LTD.
- DANGO AND DIENENTHAL INDIA PVT LTD
- DARLING PUMPS PVT. LTD.
- DCS TECHNO SERVICES PRIVATE LIMITED
- DEEPAK MINING SOLUTIONS LIMITED
- Delite Ceramic Machinery Equipment
- DIGITAL WEIGHING SYSTEMS PVT LTD
- DLA Equipments Pvt. Ltd.
- Dodge Industrial India Pvt. Ltd.
- DRISHTI POWERTECH LLP
- DUST-A-SIDE HINCOL LIMITED
- Duztec Engineering Pvt. Ltd.
- DYNASET OY
- EARTH TEKNIKS PVT LTD
- EASTERN BEARINGS PVT. LTD.
- EASTMAN CRUSHER COMPANY PRIVATE LIMITED
- ECODEA PROJECTS & CONTROL PRIVATE LIMITED
- Eimco Elecon (India) Limited
- ELASTOCON
- Electro Magnetic Industries
- ELEKTROMAG DEVICES PVT. LTD.
- ELEKTROMAG-JOEST VIBRATION PVT. LTD.
- Endress+Hauser India Pvt. Ltd.
- EPC World
- EPC&I
- Equipment Times
- ESENPRO POWER TRANSMISSION PVT LTD
- ESSAE DIGITRONICS PVT. LTD.
- EUROSTAR ENGINEERING PVT LTD
- EXXONMOBIL LUBRICANTS
- First Mining DRC-Zambia
- FIVES STEIN INDIA PROJECTS PVT. LTD.
- FLENDER DRIVES PRIVATE LIMITED
- FLUIDOMAT LIMITED
- Forgings Today
- Foundry-Suppliers.Com
- Fuchs Lubricants India Pvt. Ltd.
- GASTECH SYSTEMS PVT LTD
- GAUTAM AND COMPANY

## Partial List of Participants (ISME + IME) - 412 Exhibitors as on July 08, 2025

- GEBR. PFEIFFER (INDIA) PVT. LTD.
- German Pavilion by VDMA (about 30 Companies)
- Gilbarco Veeder Root India Private Limited
- GLOBAL SLEEVE SOLUTIONS
- GOODWIN PUMPS INDIA PVT LTD
- GORNY INSTRUMENT PVT. LTD.
- GOSTOL TST INDIA PVT LTD
- GYROS GEARS INDUSTRIES
- HAMTEK TECHNOLOGIES INDIA PVT LTD
- HARDCARB TECHNOLOGIES PRIVATE LIMITED
- Hazemag Allmineral India Pvt. Ltd.
- HEATFURN SYSTEMS
- Hydropress Industries
- Hyva India Pvt. Ltd.
- IFM Electronic India Private Limited
- IMCO ALLOYS PVT LTD
- Indcoil Transformers Pvt Ltd
- India Strategic
- Indian Rubber Materials Research Institute
- INDUSTRIAL SOLUTIONS
- Industry Outlook
- INNOTECH ENGINEERING
- INOSYTEK SOLUTIONS PVT LTD
- INSTADIGIN
- International Combustion
- INTERSTATE SUPPLY COMPANY
- Ion Exchange (India) Ltd.
- Iron & Steel Review
- ISR Infomedia
- ITW India Pvt Ltd
- Jayashree Electrodevices Pvt. Ltd.
- Jayashree Electron Pvt. Ltd.
- Jindal Steel & Power Pvt. Ltd.
- JK Tyre & Industries Ltd.
- JMS Mining Pvt. Ltd.
- JOHN FINLAY INDIA PRIVATE LIMITED
- Jyoti Innovision Pvt. Ltd.
- Kamlesh Metal & Alloy
- KATEEL ENGINEERING INDUSTRY PVT. LTD.
- KEDAR RUBBER PRODUCTS PRIVATE LIMITED
- Kennametal India Limited
- KLR INDUSTRIES LIMITED
- Komatsu
- Krishna Belts Private Limited
- KSB Ltd.
- LABINDIA ANALYTICAL INSTRUMENTS PVT LTD
- LATTY INTERNATIONAL SA
- LEBRACS RUBBER LININGS PVT. LTD.
- Liebherr India Pvt. Ltd.
- Locate365
- LUBERR PRIVATE LIMITED
- MACO CORPORATION (INDIA) PRIVATE LIMITED
- MADHUS GARAGE EQUIPMENT PRIVATE LIMITED
- Maha Hydraulics Private Limited
- MAHAJAN CONVEYOR INDUSTRIES
- MAHESHWARI MINING PVT. LTD.
- Maintonia
- Malvern Panalytical
- MANAS MICROSYSTEMS PVT. LTD.
- MARSHAL HMB PVT. LTD.
- Martin Engineering
- MATO
- MEASUREDI TECHNOLOGIES PVT LTD
- MEATECH SOLUTIONS LLP
- MEGAPLAST INDIA PVT. LTD.
- Merit BMH Engineering Pvt Ltd
- Metal Spain
- Millenia Technologies (I) Pvt Ltd
- MINE LINE PVT. LTD.
- Minerals & Metals Review
- MINING INDIA AND COALEXPRT & SOLUTION
- Ministry of Energy of the Russian Federation
- Ministry of Industry and Trade Russia
- Mipalloy Nomura Plating Company LLP
- MP FILTRI INDIA PRIVATE LIMITED
- NANDA MILLAR CO.
- National Engineering Ind. Ltd. (NBC Bearings)
- NEW SWAN AUTOCOMP PVT. LTD.
- Newton Weighing System Pvt Ltd
- NICCO CABLES PVT. LTD.
- Nippon Eirich Co. Ltd.
- NMDC Ltd.
- NMTG MECHTRANS TECHNIQUES PVT. LTD.
- NU-TECK COUPLINGS PVT. LTD.
- Nu-Teck Engineering Company Private Limited
- ORBINOX INDIA PRIVATE LIMITED
- Ore & Metals
- Oricon Metallurgicals Private Limited
- PARCOMM HYDRAULICS PRIVATE LIMITED
- PHOENIX CONTACT INDIA PVT. LTD.
- Plant & Equipment
- PLASTIC ABHIYANTA



## Partial List of Participants (ISME + IME) - 412 Exhibitors as on July 08, 2025

- PNEUMATIC POWER TOOLS & CO.
- Polyfil
- POWER BUILD PRIVATE LIMITED
- PR CRANE AND EARTHMOVERS
- PRABHU INDUSTRIAL UDYOG PVT LTD
- PRD Rigs India Pvt Ltd
- Prescient Technologies Pvt. Ltd.
- PRIMA EQUIPMENT
- Promac Engineering Industries Ltd
- PSPN AUTOMATION
- Rajmani Castings Pvt. Ltd.
- RAMANA MACHINES
- Reactore
- RETRACK AUTOMATION PRIVATE LIMITED
- REVA CRANES
- RIMCO
- Ringfeder Power Transmission India Pvt. Ltd.
- Ringspann Power Transmission India Pvt. Ltd.
- Rocscience Inc
- ROYALEO FUTURISTICS
- Rubber King Tyre Private Limited
- Russian Pavilion by Ministry of Industry and Trade Russia  
(35 companies)
- SAFE ENGINEERING
- SAHYADRI ENGINEERING
- Saksham Casting
- SANY HEAVY INDUSTRY INDIA PVT. LTD.
- Satwik Metals Private Limited
- Seashell Logistics Pvt Ltd
- SHANTHI GEARS LIMITED
- Sigma Searchlights Ltd
- SPECIAL STEEL INDUSTRIES
- SPEED-O-CONTROLS PVT. LTD.
- SPICON
- Spohn + Burkhardt India Electrotechnical Pvt. Ltd.
- SPRINT ENGINEERING PVT LTD
- SRO BHARAT
- SSH PERMCO INC
- Steel & Metallurgy
- SteelRadar
- Steelworld
- STM Construction Equipment (India) Pvt. Ltd.
- Strata Geosystems (India) Pvt. Ltd.
- Stuewe Laraon India Pvt. Ltd.
- SUDARSHAN GEARS
- SUPERIOR JETTIES LLP
- SYNTRON INDUSTRIES PRIVATE LIMITED
- SYTCO ENGINEERS
- Tappet Box
- Tata Hitachi Construction Machinery Co. Pvt. Ltd.
- TECHFAB INDIA INDUSTRIES LTD.
- TECHFLOW ENTERPRISES PRIVATE LIMITED
- TEMPCON
- TERRAFORM GEOTECHNICAL SERVICES PRIVATE LIMITED
- TERRASOURCE GLOBAL / ELGIN SEPARATION SOLUTIONS
- TH COMPANY
- The Bisra Stone Lime Company Limited
- THE EIMCO-KCP LIMITED
- Thejo Engineering Ltd.
- TKIL Industries Pvt. Ltd.
- TOP GEAR TRANSMISSIONS
- TRANSGLOBAL GEOMATICS PRIVATE LIMITED
- TRIDENT INTERNATIONAL PVT LTD
- UNICON ENGINEERS
- UNICON TECHNOLOGY INTERNATIONAL PVT. LTD.
- VATSAV ENGINEERING PRIVATE LIMITED
- VAUTID
- VDMA India Services Pvt. Ltd.
- VEEDOL CORPORATION LIMITED
- VEGA INDUSTRIAL TECHNOLOGIES PVT LTD
- VEKTRA ENGINEERING PRIVATE LIMITED
- Ventserve
- VIKAT PRIME ENERGY SOLUTIONS PVT LTD
- VISHAL OVERSEAS
- V-TORK CONTROLS
- VZEN INDUSTRIES PRIVATE LIMITED
- Waidhan Engineering & Industries Pvt. Ltd.
- Weldffab Tech Times
- WESMAN THERMAL ENGINEERING PROCESSES PVT LTD
- World Coal
- XCMG
- X-Glo
- Xylem
- YAHA WATER SYSTEMS PVT LTD
- ZENITH INDUSTRIAL RUBBER PRODUCTS PVT LTD
- ZF Group
- ZKL BEARINGS (INDIA) PVT. LTD.
- ZNL Bearings Pvt Ltd
- 99 Business Media

# REVA

## THE BEST GETS BETTER

### Cranes for Material Handling Management



REVA BELIEVES IN SAFETY OF  
WORKERS AND THEIR FAMILIES  
# PLEDGE SAFE WORKPLACE

**3 workers die each day in factories due to lack of safety measures**

Ref: <https://www.dw.com/en/deadly-industrial-accidents-in-india-kill-and-disable-thousands/a-67930230>

**YOU** CAN PREVENT **this**

Scan QR to  
Claim your  
**FREE** 8'x3'  
Safety Training  
Poster



## Workers Safety should be top priority.

**Steel Mill Duty  
EOT Cranes**



**JIB Crane**

### Why Choose REVA

- 100% in- house manufacturing ensures quality.
- 60+ years experience
- Service network throughout India



**RHSD - Reva Hoist  
Steel Mill Heavy Duty**

Corporate Office : PLOT NO 28, SECTOR 25, FARIDABAD - 121004, HARYANA (INDIA)  
Phone: 0129 4185403, Mobile:8929638199 E-mail: [mkt@revacrane.com](mailto:mkt@revacrane.com), Web: [www.revacrane.com](http://www.revacrane.com)

## OUR NAME CARRIES WEIGHT



A Part of IME 2025

**ISME**

**2<sup>nd</sup> International Metal Exhibition**

*Concurrent with International Metal Conference*

**IMC**

**Product and Company Profiles  
of Select Exhibitors**

# Product and Company Profiles of Select Exhibitors

## AIMIL LTD.

Aimil Ltd. is a leading ISO 9001: 2015 certified Company having an All-India network of 16 offices, staffed and managed by over 1000+ professionals as a market leader we provide our customer with world renowned technology from our principal/partners.



Today, Aimil is a multifunction, multi service organisation in the instrumentation industry.

Aimil has built its presence in the Instrumentation domain in the Indian market.

### Our Product Range includes:

Static Tension and/or Compression Materials Testing Machines, Equipments and Consumables for Materialographic, Sample Preparation for Micro Structure Analysis, Universal Testing Equipment for Dynamic & Fatigue Testing Machines, etc.

We also offer consultancy in the fields of Civil Engineering, Noise, Vibration & Engineering Services.

### XMATIC

Xmatic is a fully automated, end-to-end Materialographic grinding and polishing solution.

It has been designed for labs that need the very best in terms of reproducibility, throughput, process standardization, operator safety and ease-of-use.

**AXITOM-5/400** is ideal for fully automatic, high volume Materialographic Sectioning in even the roughest environments.

A very large cutting chamber, automatic tables, and movement in X, Y, and Z directions allows for positioning, clamping, and sectioning of both large, complex, and irregular workpieces.

Automatic serial cutting reduces clamping, sectioning, and operator time.

Advanced cutting modes ensure the perfect cut every time.

**CITOPRESS-30** is an advanced & programmable dual cylinder Materialographic mounting press that offers total process control, database facilities, and synchronous or independent operation of both cylinders.

Fastest hot mounting solution: 3.5 minutes with CitoFast resin. Thousands of installations worldwide prove durability under heavy loads.

Automatic dosing system for safer resin filling & less spillage.

On-screen application guide ensures high-quality mounts.

### DURAVISTA-40

Semi- to full-automatic Micro/Marco hardness tester with Vickers and Knoop capabilities. Suited for small to medium sized samples in lab use. Available with a motorized XY-stage for Brinell indent patterning.

Load range: 1 - 62.5 kgf

Automation: Automatic test cycle, Integrated indent evaluation, Patterning ability.

### STRUCTURE EXPERT WELD

Structure Expert Weld is the only stand-alone dedicated imaging tool designed for efficient and accurate weld bead control. Unique inverted optical system, automatic lighting, focus, and calibration eliminate time-consuming manual processes and measurement errors. Now, the weld inspection processes can be improved, thus saving time, money, and resources.

### LECTROPOL-5

The LectorPol-5 is designed for automated electrolytic polishing and etching of metallographic specimens. A scanning function for easy determination of process parameters,



built-in safety features, and a database with methods for various materials enables short polishing times and maximum reproducibility.

[www.aimil.com](http://www.aimil.com)

## CTC IMPEX (INDIA) PVT. LTD.

CTC IMPEX (INDIA) PVT LTD. is a UNITED ARAB EMIRATES and INDIA based company as World's Largest Rolling Mills Bearing Distributor. More than 100 Rolling mills and Rolling mills machinery mfgs. Are our valued clients. We are also keeping huge stocks of Bearings, Sleeves, V-Belts and Plummer blocks For Cold and Hot rolling mills (high temperature), Steel Plant, with some Applications like Support bearings for Long Shafting, Bearings and Track Rollers for Sintering Plants and Furnace, Wheels and Track Rollers for Conveyors, Bearings for Continuous Casting, Bearings for Universal Shafts, Bearing for Rolling Beds, Roll Neck Bearings of Back-up Rolls and Work Rolls, Bearings for Straightening and Flattening Machines, Bearings for Trimming Machines, Ladle Turret Bearing, Cardan Shaft Bearings Specially for Rolling mills.



CTC IMPEX (INDIA) PVT LTD. is the master distributor and sole Exporters of the Indian origin super precision bearing KDM (With Performance Guarantee) And an Exclusive certified Importers for KYK (Japan), Koyo (Japan), Kinex (Slovakia), LYC & ZWZ (China) SKF, FAG, Timken, RHP, NACHI, NTN, NSK, INA, IKO, KG, DYZV, SMS, DPI, ISB & many popular brands of bearings in bulk quantities. At present we are on approved list of many private Ltd., Public Ltd. and govt. organisation Rolling mills in GULF, MIDDLE EAST, SOUTH ASIA, AFRICA AND MENA COUNTRIES.

CTC IMPEX (INDIA) PVT LTD. Will be honored to utilize this opportunity and provide the best of our service to your esteemed organization in terms of quality & satisfaction at an appreciable cost. We shall be grateful if you enrol our name in your regular supplier's list and gives us an opportunity to serve you by sending us your valuable enquires. You may be rest assured that we will do our best to give you complete satisfaction by extending our fullest co-operation. Thanks for your time & please feel free to get in touch with us for any further reference.

### FOUR ROW TAPER ROLLER BEARING

4-row tapered roller bearings are critical components in steel plants, providing essential support for high-load, high-stress applications. Used in rolling mills, continuous casters, and large crushers, these bearings can handle substantial radial and axial loads simultaneously. The four rows of tapered rollers ensure enhanced load distribution, stability, and performance, even under extreme conditions such as high temperatures and heavy shocks. This makes them indispensable in maintaining smooth operation and preventing equipment failure. Their durability reduces friction, wear, and maintenance requirements, significantly improving the efficiency, reliability, and longevity of key machinery in steel manufacturing operations.



### FOUR ROW CYLINDRICAL ROLLER BEARING

4-row cylindrical roller bearings play a vital role in steel plants, offering superior performance in high-load, high-stress environments. Typically used in applications such as rolling mills, continuous casters, and heavy machinery like conveyors and cranes, these bearings efficiently manage substantial radial loads. Their robust design, with four rows of rollers, ensures enhanced stability and load distribution, reducing the risk of failure under extreme operating conditions, including high temperatures and heavy shocks. By providing reliable performance and minimizing wear, 4-row cylindrical roller bearings contribute to improved operational efficiency, reduced downtime, and lower maintenance costs, ensuring optimal performance of steel plant equipment.



## SPHERICAL ROLLER BEARING

Spherical roller bearings are critical components in steel plants, mining, and metallurgy industries due to their ability to handle high radial and axial loads, as well as misalignment. These bearings are ideal for equipment operating under harsh conditions, including rolling mills, crushers, conveyors, and kilns, where heavy vibrations, extreme temperatures, and contaminants are prevalent. Their self-aligning capabilities ensure smooth operation even with shaft deflections or misalignment. By offering durability, high load-carrying capacity, and reliability, spherical roller bearings minimize maintenance needs and downtime, significantly enhancing the performance, productivity, and longevity of machinery in these demanding industrial sectors.



## THRUST ROLLER BEARING

Thrust roller bearings are specialized bearings designed to support high axial loads, primarily in one direction, using cylindrical roller elements. These bearings are engineered to provide exceptional load capacity, rigidity, and efficiency, making them ideal for applications with significant axial forces, such as in gearboxes, rotary tables, and heavy industrial machinery. Compared to ball bearings, thrust roller bearings offer superior performance under high thrust loads. They are widely utilized in sectors like power generation, mining, and manufacturing. Proper lubrication and maintenance are essential to optimize their performance, minimize wear, and extend their service life in demanding operational environments.



## INSULATED BEARING

Insulated bearings are specially designed bearings with an electrically insulating layer, typically made of ceramic or resin, between the inner and outer rings. These bearings prevent the flow of electric current through the bearing, protecting sensitive equipment from electrical damage. They are crucial in applications where electrical currents are present, such as in motors, generators, or turbines, to avoid issues like shaft erosion, premature wear, and bearing failure. Insulated bearings help extend the lifespan of machinery, reduce maintenance costs, and ensure reliable operation in industries such as manufacturing, steel, and power generation. Proper lubrication is essential for optimal performance.



## PLUMMER & PILLOW BLOCK

Plummer block and pillow block bearings are critical components used to support rotating shafts in industrial machinery, particularly within the steel and metal sectors. The Plummer block bearing features a robust split housing design, allowing for easy maintenance and replacement of bearings. It is primarily employed in heavy-duty applications such as rolling mills, crushers, and large conveyors, where high radial loads and vibrations are prevalent. Pillow block bearings, with a single-piece housing, are typically utilized in lighter-duty applications, such as smaller motors and drives. Both bearing types enhance equipment stability, reduce wear, and improve operational efficiency, minimizing downtime and extending machinery lifespan.



## SLEEVE

A sleeve bearing, also referred to as a journal bearing, is a straightforward yet reliable bearing type designed to support rotating shafts within a cylindrical sleeve. It operates on a thin layer of lubrication between the shaft and the bearing surface, effectively reducing friction and wear. Sleeve bearings are commonly utilized in applications where axial loads are relatively low, and high rotational speeds or heavy loads are not predominant. These bearings are widely employed in motors, compressors, and pumps, offering cost-effective performance. When adequately lubricated and maintained, sleeve bearings provide long-lasting, efficient operation with minimal maintenance requirements.



[www.ctcbrg.com](http://www.ctcbrg.com)

## ■ DANGO AND DIENENTHAL INDIA PVT. LTD.

### THE DANGO & DIENENTHAL GROUP



**DANGO & DIENENTHAL**  
BETTER VALUES.

Founded in 1865 as a foundry with just a few employees, we are today worldwide renowned as a premium manufacturer of special machinery and equipment for the melting, forging, rolling, bending and heat treatment of semi-finished steel and non-ferrous metals products.

During 1998 DANGO & DIENENTHAL, Germany had felt to create an Indian subsidiary which results the formation of DANGO & DIENENTHAL (India) Pvt Ltd. at Kolkata. Around the turn of last one-decade DANGO & DIENENTHAL INDIA has manufactured specialized machineries which is backed by the design and engineering support from DANGO & DIENENTHAL, Germany for metallurgical industries in their modern workshop & cater services to Indian customers. Over the year DANGO & DIENENTHAL INDIA has manufactured and put into service many machines, equipment including system for steel plant applications. Our key area for services is commissioning of supplied equipment / system at customer works including turnkey jobs. DANGO & DIENENTHAL INDIA is also specialized in reconditioning of the equipment such as Mobile Transport Manipulator, Handling Equipments, Clay Gun and Tap Hole Drill and many more. Reconditioning of equipment are carried out by DANGO & DIENENTHAL INDIA specialized technicians at DANGO & DIENENTHAL INDIA work shop and the machines are brought to the normal trouble-free working condition by carrying out various test. DANGO & DIENENTHAL INDIA personnel pertains training of customer's people during commissioning of the equipment at site, in the various fields like maintenance of Hydraulic System, up - keeping of machine and Operation etc.

### SSM SERIES - Rail-bound Forging Manipulators

The rail-bound forging manipulators in our SSM series can position workpieces weighing between 10 and 3,500 kN in the press with the highest precision, ensuring an optimum forming effect with every stroke.



### MSM SERIES - Mobile Forging Manipulators

Our mobile forging manipulators of the MSM Series are the flexible solution for handling forgings under a press or hammer, loading and unloading furnaces and transporting forgings between the furnace and forging presses.



### MTM SERIES - Mobile Transport Manipulators

Our free-driving transport manipulators are designed for the transfer of ingots, slabs, ring blanks and rings within the forging shop area, for example to load and unload the furnaces and transfer the forgings quickly and safely between the furnaces and the presses.



### CHM SERIES - Charging, Stoking and Distribution Machines

On a furnace platform space is usually very limited. The special design of the lever system makes our CHM Series machines extremely compact and space-saving.



### SAM SERIES - Deslagging Machines

The skimming machines of the SAM Series optimize the deslagging process and increase the steel yield.



### PST SERIES - Laser-based Sizing of Pipes

The new Pipe Sizing Technology drastically reduces the time required for sizing and achieves unprecedented levels of precision. At the same time, it enables complete documentation of the inner contour.



[www.dds-in.com](http://www.dds-in.com)



## DRISHTI POWERTECH LLP

Drishti Powertech LLP, a key brand within the India-based global enterprise IKDOR Group, is dedicated to becoming a globally recognized, value-driven partner. Headquartered in Kolkata, Drishti excels in providing comprehensive, multi-vendor solutions to its international business associates.



As a leading supplier of bearings and accessories, Drishti Powertech has established itself as a top performer and preferred partner for major steel industries. Beyond steel, our products are widely trusted by diverse industrial clients across both government and corporate sectors.

Our strategic network of techno-commercial teams and robust inventory capabilities ensure rapid service delivery, providing a distinct competitive advantage. We are committed to delivering excellence and building lasting partnerships.

### ACTIVITIES:-

DRISHTI POWERTECH IS THE AUTHORISED INDUSTRIAL DISTRIBUTORS FOR THE FOLLOWING PRESTIGIOUS BRANDS:

SKF	:	PRECISION MOTION CONTROL
REGAL REXNORD	:	POWER TRANSMISSION SOLUTIONS
ROSSI	:	POWER TRANSMISSION SOLUTIONS
ATLAS COPCO	:	TOOLS & EQUIPMENT
SNAPON	:	TOOLS & EQUIPMENT
KITO	:	LIFTING SOLUTIONS
TYROLIT	:	GRINDING & CUTTING SOLUTIONS

WE ALSO HAVE DESIGN & MANUFACTURING OF EQUIPMENT FOR METAL, MINING & OTHER INDUSTRIES.

[www.ikdorgroup.com](http://www.ikdorgroup.com)

## EASTERN BEARINGS PVT. LTD.

ARB is a brand associated with top notch quality and world class services. Since last three decades, ARB is a trusted brand in automobile, industrial machinery and household appliances. With experience of over 30 years, we have been able to define perfection in manufacturing and processing techniques to meet our client's requirements in form of providing them the best and reliable quality. ARB has been well equipped with automatic plants, modern and sophisticated machineries to provide perfect technology to its clients.



We are "Make in India" Brand having three manufacturing plants along with warehouses located in National capital

Region Delhi, India, India. Apart from Delhi, we do have our factory outlets located in different areas in India.

We are manufacturing more than 2500+ sizes of bearings, production capacity of 24 million bearings per annum, capability to manufacture biggest Dia Bearings in India up to 900 mm dia. The Turnover of our company is 600+ Cr with 5000+ customer base.

### SPHERICAL ROLLER BEARING

- High Load Carrying Capacity
  - Heavy Radial Loads/Impact Loads
  - Moderate Axial Loads
  - Different Series Carry Different Ratio of Radial and Axial Loads
- Fair Speed Capability
- Can Take Misalignment
  - Up to 11/2°
  - No Loss in Capacity
- Typically Two-Rows



## SLEWING BEARINGS

Slewing bearings, also known as turntable or slewing bearings, are specialized rotational components that allow for smooth, precise rotation under heavy loads, finding use in applications like construction machinery, wind turbines, and robotics.



### Key Features:-

**High Load Capacity:** They are designed to handle heavy loads, making them suitable for applications where significant weight needs to be rotated.

**Smooth Rotation:** The rolling elements minimize friction, ensuring smooth and controlled rotation.

**360-Degree Rotation:** They allow for continuous rotation, essential in many applications.

### INDUCTION HEATER

Place the induction heater at your convenient place and keep your bearing to get mounted. Before starting the Induction Heater please put a wooden pallet below it. Plugged in the wire and start the induction heater. Place the grease oil in the point of contact of the yokes, and then smoothly place the bearings onto the yoke and then place the yokes and make the loop closed and then only.



### HYDRAULIC BEARING PULLERS

Hydraulic Bearing Pullers range is developed to reduce the risk and ease the maintenance with improved efficiency. ARB offers a wide range of bearing pullers for various types of pulls. The range includes hydraulic pullers from 5 Ton to 50 Ton of high withdrawal forces. These pullers are suitable for dismounting of Bearings, Gears, Coupling and other mechanical components.



### INDUCTION HEATER FOR DISMOUNTING COMPONENTS

#### Features:

- Auto Demagnetization with ALARM & "DMAG" on display for 6 sec. After Every Heating Cycle.
- Feature touches for different sizes of races in case of Power Failure/Off.
- Memory backup for different sized of races in case of Power Failure/Off.
- Memorial Reprogramming for 20 program full life of the Equipment.
- IGBT based controls to Operated on Medium or High Frequency or High Frequency Min 10 KHZ.
- Soft Start/Stop, Auto ramping no surge in line.
- Auto Display Indication in case Error.



### FOUR ROW TAPPER ROLLER BEARINGS

Four-row tapered roller bearings can accommodate combined (radial and axial) loads at low to moderate speeds. They are used almost exclusively in work roll applications such as rolling mills.



[www.arb-bearings.com](http://www.arb-bearings.com)

## FIVES STEIN INDIA PROJECTS PVT. LTD.

Fives, an industrial engineering group, is your solution provider for advanced technologies and digital solutions for carbon and electrical steel to increase productivity, improve energy efficiency and reduce costs:-

- Product and technology expertise



fives

- Ultra-low NOx reheating furnaces with optimized thermal performance
- Thermal technologies and cold rolling mills to process electrical steel
- Enhanced digital solutions

#### REHEATING FURNACES

Born from more than 150 years of expertise in thermal engineering, our walking beam furnaces are designed for reheating of slabs, beam blanks, blooms and billets. The best available technology - Stein Digit@l Furnace® - features high heating efficiency, fuel flexibility, low energy consumption and ultra-low emissions.



#### ADVANTEK® COMBUSTION SYSTEMS

The AdvanTek® combustion system gives optimum combustion control, from capacity to flame length to fuel choice, and the lowest NOx emissions. It is the result of extensive R&D and a vision for a more sustainable steel industry.



#### COLD ROLLING MILLS

Our range of DMS 20Hi Cold Rolling and Skin-Pass mills provide world-leading solutions to achieve the ultimate surface quality and optimum material characteristics.



#### ELECTRICAL STEEL PROCESSING LINES

Electrical steel, also known as silicon steel, is a special steel tailored to achieve specific magnetic properties. It is used for high-end applications, such as e-vehicle or windmill motors, energy generators or power transformers. Fives' know-how and proprietary technology are capable of produce a full range of electrical steel grades: NGO, GO and H&B.



#### DIGITAL SOLUTIONS

A wide range of digital solutions - from production management to process control and quality management - enable steelmakers to increase productivity, improve product quality and reduce costs. Among these, we have dynamic control systems that improve the thermal optimization of reheating furnaces and strip processing lines.



[www.fivesgroup.com/steel](http://www.fivesgroup.com/steel)

#### FLENDER DRIVES PVT. LTD.

Flender, headquartered in Bocholt, Germany, is a leading global supplier for mechanical and electrical drive systems and has the reputation for highest performance, innovation, quality, and reliability of mechanical and electrical components for around 125 years. Flender offers a broad variety of gear units, couplings and generators and associated services, with a focus on key industries such as wind power, cement, mining, oil & gas, power generation, water and wastewater, marine, conveyor and crane technology. Flender products and services combine the latest technology with extremely high quality and have been reliably providing the optimal transmission of power for decades. Flender has around 9,000 employees globally. Further information is available on the Internet at [www.flender.com](http://www.flender.com).

Globally, our products and services are offered under the brand names FLENDER® and WINERGY® for industrial products and wind power generation products respectively.

Flender Drives Pvt. Ltd. (Flender India) is a wholly owned Indian subsidiary of Flender GmbH in Germany. Our versatile manufacturing portfolio comprises of gear units, generators and couplings, along with associated accessories & condition monitoring systems. We manufacture standard as well as engineered solutions for almost all mechanical drive applications. The portfolio of FLENDER gear units & couplings ranges from universal standard catalogue products through application-specific / customer-specific solutions.

**FLENDER**

In India we have integrated manufacturing facilities at Chennai & Kharagpur to meet demand of Indian industry. Flender India has recently acquired a subsidiary company in Walajabad Tamil Nadu, which shall also contribute to enhance our production capacities. Please check the link for product portfolio:

<https://www.flender.com/en/products>

[www.flender.com](http://www.flender.com)

#### GOSTOL TST INDIA PVT. LTD.

GOSTOL TST as a European company, Gostol TST based in Slovenia and having fully equipped manufacturing facility in India at Peenya Industrial Area, Bangalore and known as Gostol TST India Pvt Ltd started from 2015. we started manufacturing in India to cut the cost but the design and quality of the machine remains the same as our mother company Gostol TST manufacturing in Slovenia as per the European Standards. The benefit of our Shot Blasting Machine manufactured in India is, getting European technology in Indian Price.

**gostol**

Since Incorporation in 2015 till date we have been manufactured and supplied more than 450+ machines.

#### Our Product details is as Below.

Spinner Hanger type • Online type • Tumblast Type • Roller conveyor • Swing table type • Manual Shot Blasting Room • Custom made Shot Blasting machines

#### VKP- OVERHEAD MONORAIL CONTINUOUS CHAIN/HOIST CONVEYOR

Designed for cavity and mass production, these machines ensure efficiency and durability in surface treatment.

- Robust Mn steel construction with reinforced liners for longevity.
- Batch capacities from 300kg to 10,000kg and more, suiting various production needs.
- Customizable conveyor systems tailored to required production rates.
- Pit-less option for smaller machines, enabling compact installation.



#### P-ROLLER CONVEYOR MACHINE

Designed for continuous production, ensuring efficiency and reliability.

- Optimized shot re-circulation for high productivity.
- Hardened rollers for durability with minimal maintenance.
- Sealed vestibules prevent shot leakage from blasting areas.
- Strategic throwing wheel placement for uniform coverage.



#### GG- TUMBLE BLAST WITH RUBBER BELT

Designed for efficient material processing with automation and durability.

- Rubber belt (1-ton capacity) and Steel belt models available.
- Hydraulic loader for seamless material handling.
- Vibratory discharge conveyor ensures smooth unloading.
- Fully automatic operation for ease and efficiency.



#### VK- Y-TRACK HANGER TYPE MACHINE

Designed for efficient batch processing, ensuring durability and adaptability.

- Robust Mn steel construction with reinforced liners for longevity.
- Batch capacities ranging from 300kg to 10,000kg and more for varied applications.



- Customizable overhead structures (Loop, Y, and I type) based on production requirements.
- Pit-less option for smaller machines, enabling easy installation and operation.

#### VPP- Free Flowing Shot Blasting Machine With Overhead Conveyor

Engineered for complex structures and high productivity, ensuring efficiency and reliability.

- Ideal for intricate structures, enabling thorough blasting.
- Secure sealing at entry and exit using horizontal seal screens or doors.
- Standard-compliant control system for easy maintenance and cost-effectiveness.



[www.gostol-in.net](http://www.gostol-in.net)

#### ■ HARDCARB TECHNOLOGIES PVT. LTD.

Hardcarb Technologies: Surfacing | Automation | Innovation

Hardcarb Technologies is a leader in engineered hardsurfacing solutions, protecting industrial machinery from aggressive wear and significantly extending operational life. With a relentless commitment to innovation since 1999, we transform wear challenges into long-term productivity gains across industries including mining, cement, power, aluminum, dredging, foundry, and construction.



Pioneering the science of wear protection for over two decades, Hardcarb has evolved from manufacturing composite wear plates to offering a comprehensive portfolio of advanced hardfacing materials and automated surfacing systems. Our product range includes:

- High-performance composite wear plates.
- Hardfacing electrodes and flux-cored tubular wires featuring chromium carbides, complex carbides, tungsten carbides, and carbo-borides.
- Pre-hardfaced castings and critical high-wear spares.
- Brazed hardmetal components for extreme wear environments.
- Carbide-infused atomized powders for PTA, laser, and powder welding applications.
- Intelligent surfacing automation solutions.

At Hardcarb, we engineer resilience. Our solutions combat abrasion, erosion, impact, thermal stress, and corrosion, ensuring unmatched equipment uptime and reliability. With deep field experience and a 360-degree technology stack, we deliver proven solutions that empower industries to operate stronger and longer.

Hardcarb Technologies – Because Every Extra Hour Matters.

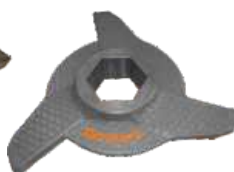
Hard facing consumables – Stick electrodes, tubular wires, tubular electrodes, flexible tungsten carbide rope electrode, atomized metal powders etc.



Composite Wearplates



Hardmetal Protected Components



Pre-hardfaced Cast Parts



Hardfacing Automation



Wear-protected Centrifugal Fan Rotors

[www.hardcarb.com](http://www.hardcarb.com)

#### ■ HEATFURN SYSTEMS

We at Heatfurn Systems, established in the year 2002, are the leading manufacturer of Bundle Rod Heaters, Strip Edge Wound Heaters, Coil Heaters, Bobbin heaters & Special Heating Systems. We are engaged in manufacturing with ultra-modern machinery and equipment. Our catalogue products are different and are of excellent in comparison in the race. They are well appreciated in the market and are a benchmark for others in the race. The quality and durability of our catalogue products are inspiration for others and are felicitated by our customers and our valued clientele. Our products are of unbeatable prices and recommended in the market. We have been able to bring forth an impeccable range of products, backed by our sound infrastructural facility. There, we have assorted latest and technically advanced equipment, required for convenient regulation of our manufacturing task. We have a team of skilled professionals with years of industry experience.



The whole manufacturing task is performed under the strict surveillance of these personnel and for the reason, the outcome offered is impeccable in nature. We initiated our firm with the aid of offering our customers complete business solutions and working for these specifications, we have reached so far in our journey. Our products are assured to provide efficient results in their applications, available at market leading prices.

##### BUNDLE ROD HEATERS

Bundle Rod heaters consist of ceramic discs which hold the heating element i.e., resistance wire. There is a central rod which provides support to the heater. We provide heaters up to 1250°C.



##### STRIP EDGE WOUND HEATERS

Heatfurn Systems manufactures specially designed and developed Strip Edge Wound heaters. Due to its unique design, it radiates maximum heat in limited space. These heaters are known for their easy installation and reliability. These heaters are best efficient in their performance and have low maintenance, due to which they are very popular among the users. We provide heaters up to 1100°C.



##### BOBBIN HEATER

The heating element (generally Nichrome) is assembled in the ceramic blocks known as bobbins. A center rod is inserted in the centre hole of bobbin, to support the entire structure. We provide heaters up to 750°C.



##### COIL HEATER

Coil heater consists of a coiled resistance wire which is fixed on the ceramic tubes or inside grooved bricks and heats the medium directly. This is referred to as the most efficient and economically feasible solution, as it requires less maintenance and inexpensive replacement parts.



[www.heatfurnsystems.com](http://www.heatfurnsystems.com)



## IFM ELECTRONIC INDIA PVT. LTD.

ifm electronic India Private Limited, Measuring and controlling - With more than 9,055 employees in more than 150 countries worldwide and 1.45 Billion Euro turnover, ifm electronic gmbh is one of the leading manufacturers in the automation industry. In 1994 the family-owned international company opened a branch in India. As one of the first German companies, ifm realized the potential of the Indian economy at that early point in time.



ifm electronic offers a wide range of "Made in Germany" product range across various Industry segments such as – Machine Tools, Dairy, Food & Brewery, Automobile, Steel & Coal, Mobile Machines, Port, Wastewater etc.

With a presence of ifm electronic India for more than 30+ years, ifm India has succeeded in achieving its name as the Top trusted brand for sensors and automation technology in India.

### The Product Portfolio includes-

- **Sensors**
  - Position Sensors
  - Process / Fluid Sensors
- **Condition Monitoring**
  - Condition Monitoring
  - Consumption Measurement
  - Evaluation Units
- **Image processing / Identification**
  - 2D image processing
  - 3D image processing
  - Identification Systems
- **IO-Link**
  - Masters / Modules
  - IIoT Software Solutions
- **Systems for Mobile Machines**
  - Control components
  - Cameras for mobile applications
  - Diagnostics & service units
- **Safety Technology**
- **Industrial Communication**

### SYSTEMS FOR VIBRATION MONITORING AND DIAGNOSTICS – VIBRATION SENSORS AND TRANSMITTERS

The unit is easy to set up without needing any additional parameter setting software. The transmitters are designed and approved for use in hazardous areas according to the applicable directives. Due to the possibility of mechanical locking, unauthorised manipulation is excluded. The protective cap, which is optionally available, ensures protection against tampering. It is often used for condition monitoring of ventilators or fans, where it reliably detects damaged impellers.



### PRESSURE SENSORS

ifm offers a wide range of electronic pressure sensors to meet the requirements of various industrial applications. The ceramic-capacitive measuring cell, tried and tested millions of times, is complemented by a stainless steel measuring cell with thin-film or thick-film wire strain gauges (series PK, PV, PT) and a piezoresistive measuring technique (for pneumatic applications).

All units have robust housings and do not require moving parts such as pistons or springs. The result: The sensors are extremely shock and vibration resistant and operate without any wear or maintenance.

The sensors are resistant to dynamic pressure peaks and guarantee high overload resistance even in the case of extreme pressure peaks that occur for example with fast closing valves.

The welded stainless steel measuring cell without any seals ensures a high degree of safety, in particular for applications with gas pressures of up to 600 bar as well as in air-conditioning and refrigerating technology where aggressive coolants (freons) are used.

### COMPACT FLOW SENSORS WITH DISPLAY

The SA series flow sensors with display serve to monitor liquids and gases in pipes. In addition to volumetric flow monitoring, the SA also monitors the temperature of the medium. Thanks to a broad selection of process adapters, the sensors can be used in nearly all industrial applications. They are frequently used in cooling circuits, e.g. in steelworks, automotive industry and in glassmaking.



Their robust stainless-steel housing provides high reliability even in harsh operating conditions.

Set-up, maintenance and operation are facilitated by a 4-digit LED display, which is visible from all sides even at greater distances, and two switching status LEDs on the sensor head. The display can be switched from the indication of "red" to an alternating indication of "red – green". So, switching states can be highlighted or an independent colour window can be created.



### ANALOGUE INFRARED TEMPERATURE SENSORS WITH DISPLAY

The TW infrared temperature sensor is used for precise non-contact temperature measurement of particularly hot objects or objects which are difficult to access, e.g. in the steel, plastics or glass industries. The decisive advantage of these sensors is that no mechanical contact between the object and the sensor is necessary.

The measured value is provided via an analogue output. In addition, a switching output is available which can be used as NC or NO output, depending on the configuration.



The extremely robust stainless steel housing withstands even the most severe industrial applications.

To enable precise temperature measurement, the degree of emission can be quickly and easily set using the pushbuttons and display. The current temperature of the object to be measured is displayed during operation.

### O1D DISTANCE SENSORS

The O1D is a distance sensor with time-of-flight measurement based on PMD technology (PMD = Photonic Mixer Device). Measuring only 42 x 42 x 52 mm, the sensor offers a very long range, reliable background suppression, a visible red laser light spot and a high excess gain.

The sensor is resistant to extraneous light and can be used in workshops where daylight hits the sensor or target from above. Reflective objects such as metal surfaces are reliably detected; reflective strips on high-vis vests reliably suppressed. With O1D, distances can also be measured reliably when the light beam does not hit the object surface vertically. This allows flexible mounting, facilitates installation and saves costs. The accurate background suppression ensures that even shiny, matt, dark or light objects are safely detected.



The O1D distance sensor is designed for positioning, speed control and level measurement tasks. For example, it can be used to protect autonomous industrial transport systems against collision or position industrial trucks in high rack storage areas.

### SAFETY ROPE EMERGENCY STOP SWITCHES

Safety rope emergency stop switches are often used in conveyor belt systems to secure large danger areas. Pulling the tensioned rope, rope breakage or impact on the E-stop cause activation of the switching function of the safety rope emergency stop switch. After activation of the E-stop function a clip mechanism maintains the E-stop command until it is unlocked manually by pressing the blue reset button.

Reset is only possible with correct rope tension.

The rope tension is adjusted directly on the safety rope e-stop switch. The switch features a rope tension indicator to facilitate adjustment, troubleshooting and maintenance.

Using AS-i PCBs, rope switches, belt drift switches and other switches can be integrated into AS-i systems. If needed, this can also be safety-related (Safety at Work).



## INDCOIL TRANSFORMERS PVT. LTD.

We are INDCOIL TRANSFORMERS PVT. LTD., a leading transformer manufacturer in Mumbai since 1967. With over 50 years of experience and a top line exceeding 100 Cr+, we supply oil-type and dry-type transformers for various capex projects. Our state-of-the-art facilities in Thane, Maharashtra, enable us to produce all types of transformers with the fastest turnaround time and highest quality. We specialize in Instrument Transformers, including Current, Control, and Potential Transformers, catering to major industries nationwide.



### INDCOIL PRODUCT RANGE: (oil and dry-type transformer products)

- Power Transformers
- Oil Cooled Distribution Transformers as per BIS
- Distribution Cast Resin Dry Type Transformers (CRT)
- Distribution VPI Dry Type Transformers (VPI)
- Converter Duty Transformers, Rectifier, Earthing & Furnace Transformers
- Compact Substations
- Lighting Transformers VPI / CRT

### OUR TRANSFORMERS ARE APPROVED WITH:

ACC CEMENT, JSW CEMENT, AMBUJA CEMENT, RCF, GRASIM, J K CEMENT, BIRLA CEMENT, ITD CEMENTATION LTD, JSW ENERGY, ISGEC, RVNL, PDIL, WARTSILA, JMC PROJECTS, KALPATARU TRANSMISSION LTD, SEVEN HILLS HOSPITAL, TAJ GROUP OF HOTELS, MMRDA MONORAIL, ABB, SCHNEIDER, L&T AUTOMATION, HONEYWELL AUTOMATION INDIA LTD, GUJARAT FLUOROchemicals LTD, KRISHI RASAYAN EXPORTS LTD., HITACHI POWER, L&T ECC, DEPARTMENT OF ATOMIC ENERGY, AVANT-GARDE, ONGC, PGCIL, TOYO ENGINEERING LTD, DCPL, RIL, MECON, ThyssenKrupp, PDIL, TATA Projects, ISGEC, M N DASTUR, EIL, TATA CONSULTING ENGINEERS, TECNIMONT, JACOBS, ABB, BHEL, THERMAX, L&T HYDROCARBON, L&T Power, L&T Construction, VIKRAM SOLAR, STERLING WILSON, SIEMENS, HINDALCO, C&S, ONGC, RELIANCE, GAIL, NTPC, & MANY MORE.

We have an extensive Service Network with offices and multiple experienced service engineers in Mumbai, Delhi, Kolkata, Ranchi, Bangalore, Vadodara, and Pune. We also provide on-site services, including supervision during installation and service maintenance requirements on a PAN INDIA basis.

### POWER TRANSFORMER

- Voltage Class: 3.3kV/ 6.6kV/11kV/ 22kV/33kV
- From 1MVA - Upto 20MVA
- As per IS 2026 standards
- As per IEC 60076 standards



### DISTRIBUTION TRANSFORMER

- Voltage Class: 3.3kV/6.6kV/11kV/22kV/ 33kV
- Level-1/2/3/4/5
- From 250kVA - Upto 2.5MVA
- As per IS 1180 standards



### CONVERTER DUTY TRANSFORMER

- Voltage Class 3.3kV/ 6.6kV/ 11kV/ 22kV/ 33kV
- Upto-18MVA
- As per IS 2026 standards
- As per IEC 60076 Standards



### CAST RESIN TRANSFORMER

- Voltage Class 3.3kV/6.6kV/11kV/22kV/33kV
- From 100kVA - Upto 5MVA
- As per IS 2026 standards
- As per IEC 60076 standards



### HERMETICALLY SEALED ESTER OIL TRANSFORMER

- Voltage Class 3.3kV/6.6kV/11kV/22kV/33kV
- From 250kVA - Upto 5MVA
- As per IS 1180 standards



### FURNACE TRANSFORMER

- Voltage Class: 3.3kV/6.6kV/11kV/22kV/33kV
- Upto-12MVA



- As per IS 2026 standards
- Type-ONAN/ONAF

### VPI DRY TYPE TRANSFORMERS

- Voltage Class: 3.3kV/6.6kV/11kV/22kV/33kV
- UPTO 5MVA
- As per IS 2026 standards
- As per IEC 60076 standards



### OIL DISTRIBUTION TRANSFORMER

- Voltage Class: 3.3kV/6.6kV/11kV/22kV/33kV
- UPTO 2.5MVA
- As per IS 2026 standards
- As per IEC 60076 standards



### DRY LIGHTING TRANSFORMERS (VPI/CRT)

- Voltage Class: Below 1 KV
- FROM 1KVA - 1000KVA
- As per IS 2026 standards
- As per IEC 60076 standards



### COMPACT SUBSTATION (CSS)

- Voltage Class: 3.3kV/6.6kV/11kV/22kV/33kV
- Upto-2.5MVA
- As per IS 2026 standards
- As per IEC60076 standards



[www.indcoil.com](http://www.indcoil.com)

## INOSYTEK SOLUTIONS PVT. LTD. (PROCON SYSTEMS)

Inosystek Solutions Pvt Ltd.- PROCON systems is an Engineering Company involved in providing the solutions for Metal Industry. Our Solution Covers majorly with Temperature measurement system. Below are some of the brief solution which company provides.



- Infrared Pyrometer for Harsh Application
- Thermal Imaging Solutions for various Steel / Metal Processing Application
- Infrared Thermometer.
- Furnace Thermal Profiling System
- Dust Dosimeter & Noise Dosimeter.
- Customised Solution of Industrial Sensor Protection and Engineering.
- Automation.

### Phoenix<sup>TM</sup> TEMPERATURE PROFILING/ TUS SYSTEM FOR HEAT TREATMENT APPLICATIONS.

The system can travel with the product through the complete heat treatment cycle including the Gas/ water/ salt or oil quench, monitoring actual product temperatures. The information obtained can then be used to assist with process set up & trouble shooting and to optimize the operation of the process, potentially increasing throughput and reducing energy costs, whilst maintaining product quality. It can also be used to comply with specific industry heat treatment specifications such as AMS2750E, CQI-9 etc.

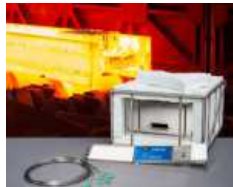


### Phoenix<sup>TM</sup> 'HOT-BOX' TEMPERATURE PROFILING SYSTEM FOR STEEL SLAB REHEATS APPLICATIONS.

The system can travel with a test steel-slab through the reheat furnace, monitoring the actual slab temperature at critical positions and depths. The information obtained can then be used to verify the mathematical-model to

control the transient times and drop out temperatures of the slabs during reheating prior to rolling.

The system includes a high temperature operating datalogger, a thermal barrier to protect the logger from the ambient temperature as it travels through the furnace, thermocouples and easy-to-use analysis software, enabling the user to quick produce comprehensive reports in a clear and concise format.



**CASELLA (A TSI COMPANY)** manufacturer of the Air Suspended particles & Environmental Noise monitoring and assessment instruments as per NIOSH, DGMS Compliance & IEC61672 CPCB Guidelines Method, are ideally suited for the measurement of particulate concentration such as dust, smoke, fumes, Gases from combustion, materials processing, manufacturing process & Environmental-Noise. These Air & Noise Pollutants interfere in Working place of manufacturing process resulting spread contamination, illness and low worker productivity from the inhalation of toxic substances contributory factors to many chronic and acute medical conditions, including asthma, bronchitis, and lung cancer (Silicosis, pneumoconiosis) & Noise Induced Hearing Loss.



**ECOM-Germany manufacturer** of Flue Gas Analyzer, which is world's most compact, Economical, accurate which makes user more flexible on measurement by its Precision techniques i.e.

- Second Purging-pump for CO Protection against Higher Concentration
- Inbuilt Peltier-Chiller with Printer
- Instrument must have inbuilt averaging function (Mean Value)
- Longer Shelf Life of O2 Sensor upto 4 Years
- Lightest & Compact in Weight



**Kunak – Spain Manufacturer** of Air Quality Monitoring Equipment which is MCerts Certified, USEPA Tested. Measures Environmental data such as PM, Gases-VOC, Noise, WindSpeed-Direction, Temperature-RH, Solar-Radiation, Rain Gauge and many other parameters simultaneously, gives data remotely through Cloud-Server.



#### SLAG DETECTION SYSTEM- AMETEK LAND

- Rugged Design: The SDS system is designed to withstand the harsh conditions of continuous operation in the steel plant.
- Intelligent Imaging: At the end of the tap the levels of slag and steel rapidly reverse. SDS uses a high resolution Radiometric Thermal Imaging Camera to detect the steel and slag. The power full and intelligent software generates an alarm at predetermined level of slag to stop the tap.
- Automatic Stream Tracking: The SDS System is equipped with "automatic stream tracking". The dedicated Image PRO software has the option to track the width and position of the stream regardless of the position of the sensor unit.



#### FLARE STACK MONITORING-AMETEK LAND

Flare stacks are widely used in industries especially chemical, petrochemical and steel to safely dispose of excess gasses through combustion. These may be unwanted waste gases, or flammable gases released to prevent unplanned over-pressurising of plant equipment.

AMETEK Land's **LWIR-640** thermal imager produces high-resolution thermal images of any target, from any distance. This allows the flame to be monitored from a safe distance, ensuring the camera is not damaged by stack conditions and also making maintenance much safer and easier. The imager produces a visual image, but also detects the infrared radiation emitted from the flame. This means the camera sees the flame whether it is coloured or clear, and whatever the weather.



## INSTRON (ITW INDIA PVT. LTD.)



Instron is a renowned global leader in materials testing solutions, established to address the increasing demand for high-quality testing equipment. The company offers a comprehensive range of products and services tailored to meet the diverse needs of various industries, such as automotive, aerospace, biomedical, and manufacturing. Instron's solutions are designed to ensure the highest standards of quality and reliability, enabling businesses to achieve precise and accurate testing results. With a strong commitment to innovation and customer satisfaction, Instron continuously develops advanced testing technologies and provides exceptional support to its clients worldwide. Their expertise and dedication make them a trusted partner for organizations seeking reliable and efficient materials testing solutions.

For over 75 years Instron has supplied testing systems to the world's leading manufacturers and educational, scientific, and research institutions. Instron has long partnered with metals manufacturers to design systems to meet their unique needs. Our engineers participate in all relevant ASTM and ISO committees to advance the standards and make sure that all Instron systems, software, extensometers, and accessories are up to date on compliance. Our testing systems are designed to last for decades, and buying an Instron is assurance that your investment will continue to meet industry standards well into the future.



Instron Series electromechanical universal testing machines can perform a wide range of mechanical tests including tensile, compression, bend, peel, tear, friction, and shear testing. These systems are designed to test materials, components, and products in accordance with ASTM, ISO, and other industry standards. Compatible with hundreds of accessories for a wide range of applications, these universal testing systems are available in a multiple sizes and configurations for R&D, QC, and other mechanical testing up to 600 kN force.



The Instron servo-hydraulic test systems are designed to cater to a wide range of testing needs. These systems are utilized to perform strength, fatigue, and fracture tests across a variety of materials, including metals, composites, and plastics. With force capacities ranging from 25kN to 2000kN.

Additionally, all Instron servo-hydraulic test systems can be integrated with an environmental chamber to simulate subzero or cryogenic conditions, as well as a HT Furnace for conducting tests at elevated temperature. This integration enhances the systems' capability to replicate real-world environmental conditions, ensuring comprehensive and accurate testing outcomes.



The Instron High Force Fatigue Testing Machines are servo-hydraulic solutions built for testing materials or components at large forces using a four-column high stiffness loadframe and a spacious T-slot bed. They are typically used for static and fatigue testing of metals, wire ropes, rebars, rails, concrete and aerospace components. These test systems can be configured to tests Fracture Toughness (FAT) and Crack Tip Opening Displacement (CTOD) tests under corrosive environment.



[www.instron.com](http://www.instron.com)



## INTERSTATE SUPPLY COMPANY

Interstate Supply Company, your premier destination for Industrial Lubricants & Greases! As a trusted distributor of top-notch brands, we specialize in providing tailored lubrication solutions to meet the diverse needs of industries throughout India.



With a comprehensive range of products from leading manufacturers, backed by our expertise and commitment to quality service, we ensure optimal performance and efficiency for your machinery and operations. Explore our extensive catalogue and experience the difference with Interstate Supply Company.

We are proud to be the authorized distributors of the following renowned brands:

- BHARAT PETROLEUM CORP. LTD. (MAK)
- HIDUSTAN PETROLEUM CORP. LTD. (HP)
- GULF OIL LUBRICANTS INDIA LIMITED (GULF)
- BALMER LAWRIE & CORP. LIMITED (BALMEROL)
- GENERATION FOUR ENGITECH LTD (HITECH SOLUTIONS)

### TRANSFORMER OIL

Transformer oil is an insulating oil that has been specifically designed for use with transformers and other electrical equipment elements by enabling them have electric insulation as well as suppressing corona and arcing while dissipating heat thereby keeping cool these components hence ensuring they perform at optimum levels and last longer without causing problems such as breakdowns and other failures.



### HYDRAULIC OIL

Hydraulic oil is a specially formulated fluid used in hydraulic systems to transmit power. It is designed to provide lubrication, corrosion protection, and heat transfer capabilities to ensure smooth operation of hydraulic machinery. With its high viscosity index and anti-wear additives, hydraulic oil helps maintain system efficiency and prolong equipment life. Suitable for a wide range of temperatures and pressures, this essential fluid is crucial for the proper functioning of hydraulic systems in various industries.



### GEAR OIL

Gear oil are classified mineral oil and synthetic lubricants which are formulated with specifically titled substances to shield gear systems within many machineries such as automotive transmissions, differentials, planetary gear mechanisms, etc. They play an important role of lubrication to lessen friction, wear and heat in gear contacts. Gear oils are often defined by their high viscosity, allowing them to hold onto a protective film under heavy loads and temperature fluctuations. They could also add various additives including anti-wear, anti-oxidation, extreme pressure (EP).



### ENGINE OIL

Internal combustion engine need some stuff that helps to soften the engine parts from rubbing off with each other. Engine oil acts like lotion between the moving parts which prevents too much damage when they move against each other. This should help because when two metals come against other as a result of motion there will be a great deal of resistance this is what causes heat to be generated. Engine oil fills in the gap that would otherwise be left between these moving surfaces thus reducing the rate of wear and tear significantly. Moreover it also removes such harmful substances as soot from the combustion chamber diatoms from other places. Thus it prevent the rusting of machine parts as well as prolong its service life.



### CUTTING OIL

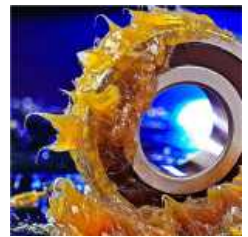
The purpose of metalworking oil is to decrease friction, heat, and tool wear during machining and metal-forming operations. Such liquids make cutting, drilling, and grinding tools effective and long-lasting while producing a perfectly even surface on the metal piece, feedstock or workpiece. They also

help to quench deep holes faster, remove metal chips better maintaining the more exact sizes of workpieces during operations on metals, improve its quality as well.



### GREASES

Greases are semi-solid lubricants composed of a base oil thickened with a soap, such as lithium or calcium, to form a stable substance suitable for lubricating moving parts in machinery and automotive applications. They adhere well to surfaces, reducing friction and wear even under extreme pressures and temperatures. Greases also provide protection against water ingress and corrosion, making them essential for prolonging the lifespan and maintaining the efficiency of bearings, joints, and other components in various industrial and mechanical systems.



[www.interstatesupply.co.in](http://www.interstatesupply.co.in)

## JAYASHREE ELECTRON PVT. LTD.

It all begins in 1972 with Jayashree Group Mother Organization Jayashree Enterprises Launched with Patented product Electrodynamic Speed switch. Now there are Three company under JAYASHREE GROUP

जयश्री

- Jayashree Electrodevices Pvt. Ltd. Having Conveyor safety switches like pull cord switch, Belt sway switch, Belt watch panels and servo Motors.
- Jayashree Electron Pvt. Ltd. Having products like Zero Speed switches. Proximity switches, soft starters, sequence Timers, Electronic brakes.
- Jayashree encoders - Having product like Optical Encoders.

JAYASHREE  
ELECTROD

JENCODER  
THE PERFECT CODER

Today we are having more than 6000 satisfied customers we are committed to supply products of high quality and are geared up to meet challenges of 21st century .We sold our products in several countries worldwide.

### JEDL



### JENL



### LEVEL SENSOR



### PROXIMITY





**SEQUENCE TIMER**

**SOFT START**



**SPEED SWITCH**



[www.jayashree.co.in](http://www.jayashree.co.in)

## LABINDIA ANALYTICAL INSTRUMENT PVT. LTD.

Labindia Analytical Instruments Pvt. Ltd. is a leading Indian manufacturer and supplier of high-quality analytical and laboratory instruments, established in 1981. With its headquarters in Thane, Maharashtra, and a modern manufacturing facility in Navi Mumbai, Labindia has earned a trusted reputation across industries such as pharmaceuticals, chemicals, petrochemicals, and food and beverages.

Labindia's extensive product range includes dissolution testers, spectrophotometers, titrators, pH meters, and atomic absorption systems, designed to meet global quality standards like GLP and GMP.

Driven by a vision of excellence, innovation, and integrity, Labindia aims to deliver cost-effective, reliable solutions backed by robust technical expertise. With over 500 professionals and a pan-India presence, the company continues to empower scientific and industrial research through cutting-edge instrumentation and customer-centric service.

### AIR JET SIEVE SHAKER JS1100 (TOUCHSCREEN)

The JS1100 Air Jet Sieving Machine delivers exceptional particle separation and deagglomeration for a wide range of industries, including pharmaceuticals, chemicals, plastics, and food. Equipped with advanced air jet technology and an innovative nozzle design, it ensures consistent results while minimizing effort. With a built-in 5" touchscreen display



### USP APPARATUS 4

The system's design supports nearly every dosage form-from standard tablets and capsules to complex drug-eluting implants and semi-solids. Labindia works closely with pharmaceutical innovators to develop custom flow-through cells, optimizing dissolution methods for emerging drug delivery platforms. Whether you're evaluating microspheres, parenterals, or coated ocular devices, the flow-through system adapts to diverse solubility profiles and dosage geometries while ensuring compliance with global pharmacopeial standards.



### DISSOLUTION TESTER DS 8000 BASIC SMART

DS 8000 Basic is designed with an intuitive control interface, ensuring straightforward operation for routine testing. It supports USP and IP protocols, delivering precise and consistent results for quality control applications.

### UV 3200 SPECTROPHOTOMETER

Double Beam UV 3200 Spectrophotometer, designed for precise measurements across 190 to 1100 nm. Ideal for pharmaceutical and biochemical applications, it features simultaneous sample/reference detection, PC software control, and an automatic cell changer.

### UV 1000+/1000

Features advanced dual monochromator technology, making it ideal for various applications in pharmaceuticals, biotechnology, and food safety.

### ICP 5000 DV

The ICP 5000 DV is a high-performance Inductively Coupled Plasma Optical Emission Spectrometer (ICP-OES) with a true simultaneous polychromator system, ensuring superior anti-interference analysis and detection.

### ICP-MS 5500

The Labindia ICP-MS 5500 is a next-generation Inductively Coupled Plasma Mass Spectrometer (ICP-MS) designed to meet the most demanding analytical challenges.

### ELVA X PLUS/PRO XRF BENCHTOP SPECTROMETER

The ElvaX Plus spectrometer is a versatile benchtop energy-dispersive X-ray fluorescence (EDXRF) analyzer, detecting elements from Na (Z=11) to U (Z=92).

### PROSPECTOR 3 HANDHELD XRF SPECTROMETER

X-Ray Fluorescence Spectrometer is the lightest and most accurate handheld XRF analyzer available. It offers unparalleled speed and detection limits, making it ideal for various materials, including alloys, ores, and plastics.

[www.labindia-analytical.com](http://www.labindia-analytical.com)



## MANAS MICROSYSTEMS PVT. LTD. (BAUMER GROUP)

Manas Microsystems Pvt Ltd is a leading manufacturer of water, liquid and gas flow meters and solutions related to flow measurement technologies.

The company is known for its expertise in designing and producing various types of flow meters used for applications in heat treatment, foundries, metal industry, furnaces, boilers etc.

Manas Microsystems manufactures BTU meters, Thermal Energy Meters, Steam flow meters, Gas flow meters like CNG-LPG-PNG flow meters, Bio Gas flow meters, Compressed Air flow meters, Industrial Oxygen flow meters. The gas flow meters measure mass flow rate of gases directly without any need for pressure or temperature compensation. Manas heat transfer meter (Model HET-100L) is popular in Thermic Fluid applications.

Apart from the above, Manas manufactures electromagnetic flow meters, ultrasonic flow meters, and thermal mass flow meters. These devices are used to measure the flow rate of liquids in different applications.

Other products made by Manas include Flow totalizers, Draft gauge for boilers etc.





The company has established a presence both in the domestic Indian market and internationally, catering to a diverse range of industries requiring accurate and reliable flow measurement solutions.

**Manas Microsystems** is one of India's largest Gas Flow Meter manufacturers and exporters.

We are perhaps the only Gas Flow Meter supplier with the capability to Manufacture, Assemble, Test, and calibrate mass flow meters for gas applications.

Designed for accuracy and reliability, our gas flow meters are suitable for various industrial applications in the heat treatment industry, automobile industry, metal industry.

Being a direct mass flow meter, it does not require any pressure and temperature compensation.

It can be a good alternative to Vortex flow meter. To know more about it visit <https://manasmicro.com/thermal-mass-flow-meter/>

**Manas Microsystems** offers an insertion-type Thermal Mass Flow Meter, an ideal choice in such cases. This flow meter can measure both instantaneous flow rate & total flow precisely. Process pressure and temperature fluctuations pose no problem in measurements, as this flow meter does not need any pressure or temperature compensation. It can easily be installed on gas pipelines or ducts.



The sensor has no moving parts. Hence, it does not need any maintenance, except for occasional cleaning with compressed air. The sensor is straightforward to install, as one must only insert and screw it in the socket welded to the pipeline, and align the sensor, as per the instructions in the manual, on the pipeline/duct. The necessary straight length of pipe on both sides of the sensor must be ensured. The sensor is connected to the electronics, so the installation is complete. It is so simple!

**Manas heat transfer meter (Model HET-100L)** is a meter for the Heat Transfer application. It measures Thermal Energy carried by various fluids that are used as heat transfer mediums.

This meter is popular in Thermic Fluid applications.

BTU Meter For Heat Transfer HET-100L takes care of the compensation of variation in density & specific heat with varying temperatures of the fluid.



It also measures the thermic fluid flow rate & is also useful for measuring thermal transfer for hot water flow.

**Manas offers Steam Flow Meter** for measuring flow rates of saturated and superheated steam, mass flow rates of Boiler feed Water in closed conduits. It is based on the differential pressure measurement across the orifice.



Manas steam flow meter is a complete engineered package to suit user requirements. Hence there is no hassle during installation. There are no moving parts and hence the unit works without problem for a long period. No wiring connections are required during installation. Installation is easy because very little care needs to be taken at the site during installation to avoid leakages.

**Thermal Mass Flow Meter** is one of the best fuel gas flow meters, as it requires no pressure or temperature compensation and can detect gas mass flow directly.

It is accurate, simple to install, and has no moving parts. It provides good rangeability, outstanding low flow sensitivity, and minimum pressure loss, making it the ideal flow solution for fuel gas measurements.

It is used for Compressed Natural Gas (CNG) Liquefied Petroleum Gas (LPG) or Piped Natural Gas (PNG) applications. If the gas composition is known, this gas flow meter can be configured for many other fuel gases also.



**Compressed air** is one of the most expensive energy sources within a factory. It is much more critical to correctly quantify compressed airflow. In the industrial context, compressed air flow measurement provides a considerable opportunity to save money by lowering energy expenses.



Manas Thermal Mass Flow Meter will help you assign expenditures, track total consumption, and increase plant productivity. You can do this by monitoring compressed air usage rates through various facility divisions. Manas Compressed Air Flow Meter can provide both overall consumption and time tracking, which can aid in identifying high-consumption times.

**Manas electromagnetic flow meter** is independent of Viscosity, Density, Dissolved/Un-dissolved solids, pressure, or temperature of the flowing liquid if it maintains certain minimum conductivity. This flow meter is field configurable and hence it is easier to change the range on the field.



We have a calibration set up in accordance with NABL requirements.

Use of various types of Liner & Electrode materials make these flow meters popular in ETP, STP, Waste Water and other industrial water applications.

Manas has the capacity to manufacture, assemble, test, and calibrate all flow meters in-house. Very few flow meter manufacturers have this capability.

[www.manasmicro.com](http://www.manasmicro.com)

## ■ MILLENIA TECHNOLOGIES (I) PVT. LTD.

Millenia Technologies (I) Pvt. Ltd. an Authorized Exclusive dealer and respected Business Partner in India of the below mentioned EUROPEAN companies that provides best-of-breed business solutions leveraging technology delivered by the best in class people for Surface Finishing, Ultrasonic Cleaning, Measuring of precision components & CVD coating.



### OTEC Präzisionsfinish GmbH

OTEC has a worldwide reputation of leading manufacturer of high quality innovative machines for DEBURRING, GRINDING, EDGE HONING, SMOOTHENING & POLISHING for different industries

### ROSLE Präzisionsfinish GmbH

Rösler is the only surface finishing supplier in the world that offers the two most essential finishing technologies, mass finishing and shot blasting, as well as industrial washing systems and in-house production and development

### Elma Schmidbauer GmbH

ELMA is quality manufacturer of INDUSTRIAL ULTRASONIC CLEANING MACHINES & CHEMICALS along with STEAM CLEANING from more than 50 years.

### Alicona Imaging GmbH

BRUKER ALICONA is a leading company in Graz, Austria manufacturing machines for HIGH RESOLUTION OPTICAL 3D MEASUREMENT SYSTEM for FORM & ROUGHNESS measurement with 360° rotation possibility

### IHI Bernex

Bernex CVD systems are unmatched in their precision and reliability, providing quality coatings. Bernex develops and supplies CVD equipment for all large market players

### IHI Hauzer

Hauzer has been a pioneer in plasma coating equipment since 1983. Creative solutions are part of our DNA.

[www.millenia-technologies.com](http://www.millenia-technologies.com)

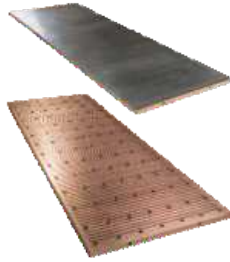


## ■ MIPALLOY NOMURA PLATING COMPANY LLP

Mipalloy Nomura Plating **mipalloy NOMURA PLATING COMPANY LLP** Company LLP (MNPCO) is a leader in the field of mould plate surface treatment. Mipalloy Nomura Plating Company LLP does refurbishment of used Continuous Casting Mould Plates with Nickel & Patented TAP-II Coating for Steel Industry.

Mipalloy Nomura Plating Company LLP focuses on reconditioning worn Continuous Casting Mould Plates for the steel sector. They utilize specialized Nickel plating and their exclusive TAP-II Coating to restore the plates.

This process improves the plates' longevity and efficiency, providing a reliable and economical option for steel manufacturers.



[www.mipalloynomura.com](http://www.mipalloynomura.com)

## ■ NU-TECK COUPLINGS PVT. LTD.

Nu-Teck Couplings Pvt. Ltd. is a pioneer in manufacturing Mechanical Power Transmission products, which are widely used across all heavy industries globally.



### INTRODUCTION

It is my pleasure to introduce our company, Nu-Teck Couplings Pvt. Ltd., India- a family owned firm Established in 1968. 57 years in the business brings us to today- Nu-Teck Couplings Pvt. Ltd. are the pioneer manufacturers of Mechanical Power Transmission products. With a focus on product excellence, we tread forward continuing to meet and surpass industry standards. We're a company that specializes in Mechanical Power Transmission products such as Gear Couplings, Chain Couplings, Jaw Coupling, Pin Bush Coupling, Resilient Coupling, Tyre Couplings, Torque Limiter Couplings & Sprockets.

### We take pride to provide solutions for companies by:

- Providing products machined on world class CNC gear shaping and gear hobbing machines
- Providing high quality products (An ISO 9001:2015 Company)
- Providing custom manufactured couplings on a made to order basis

### GEAR COUPLINGS

Nu-Teck crowned teeth gear couplings feature specially shaped gear teeth with a slight convex curve, known as a crown, on both the internal and external gears. This design optimizes contact between the teeth, reducing wear and enhancing torque transmission efficiency while accommodating misalignments. The crowned teeth help distribute loads more evenly, minimizing stress concentrations and improving the coupling's overall durability. Crowned teeth gear couplings are commonly employed in applications where misalignment and high torque transmission are prevalent, providing reliable performance and extended service life.



### ROLLER CHAIN COUPLINGS

Chain couplings utilize roller chains to connect two shafts for transmitting power. They consist of two sprockets attached to each shaft and a roller chain looped around them. The chain's flexibility allows for angular misalignment and shock absorption, making chain couplings suitable for applications with varying loads and misalignments. They're often used in industrial machinery such as conveyors and pumps, offering reliable power transmission with minimal maintenance requirements and cost-effectiveness.



### TORQUE LIMITERS

Friction plate type torque limiters are safety devices used to protect machinery from overload. They consist of friction plates sandwiched between two flanges. When torque exceeds the preset limit, the plates slip,



preventing damage to the equipment. Once the overload is resolved, the plates re-engage. These limiters are widely used in industrial applications where sudden torque spikes are common, ensuring operational safety and minimizing downtime due to equipment damage.

### TORQUE LIMITER COUPLINGS

Friction plate type torque limiter couplings combine the functions of torque limiters and couplings. They consist of friction plates between two flanges. When torque exceeds the set limit, plates slip, preventing damage. This protects machinery from overload while transmitting power. After overload, plates re-engage, ensuring continuous operation. These couplings are vital in applications with variable loads or sudden torque changes, offering both power transmission and overload protection in a compact design, reducing downtime and maintenance costs.



### SPROCKETS

Roller chain sprockets are toothed wheels with grooves that accommodate roller chains. They mesh with the chain's rollers, transmitting rotary motion between shafts. These sprockets are crucial components in chain drives, commonly used in machinery such as conveyors and motorcycles for power transmission.



### PINIONS/GEARS

WE AT NU-TECK HAVE THE CAPACITY TO MANUFACTURE GEARS UPTO 2METRE DIAMETER/ 25 MODULE ON GEAR HOBGING.

We also manufacture other types of couplings like pin bush coupling, tyre coupling, jaw coupling and resilient coupling.



[www.nuteckcouplings.com](http://www.nuteckcouplings.com)

## ■ NU-TECK ENGINEERING COMPANY PVT. LTD.

Established in the year 1980, Nu-Teck Engineering Company Private Limited is one of the eminent names engaged in the industry. We manufacture and supply Crane Duty Gear Boxes, Hardened & Ground Gear Boxes, Aerator Gear Boxes, Agitator Gear Boxes, Turbine Gear Boxes and Twin Screw Extruder Gear Boxes, Customised Spur / Helical / Spiral Bevel Pinions & Gears. The products offered by us are successfully serving numerous organizations in the domestic markets. We are renowned for manufacturing a product line that is considered best in class throughout the industry.



Our organization is headed by a team of technocrats, who hold rich industry experience and are counted amongst the best in this field. They are the main reason behind the success of the company. Under their able guidance, we have moved from strength to strength. Owing to the support and tireless efforts of our team, the company has been able to establish a strong foothold in the domestic & international market."

### MANUFACTURING FACILITIES

#### Gear Cutting Machines

CNC Gear Hobbing Machines, Conventional Gear Hobbing Machines, Gear Shapers of different makes with maximum capacity of 25 module and 2000 mm dia. of job.

#### Gear Grinding Machines

Profile Grinding Machines with maximum capacity of 12 module and 1000 mm dia. of job and equipped with Hoffler make Gear Tester to ensure the accuracy of the gears for profile and helix angle.

#### Horizontal Boring Machines

All equipped with DROs" with maximum capacity of spindle 110mm dia and table size 1100 mm x 1300 mm.

#### Bore & Face Grinding Machine

Bore & Face Grinding Machine for grinding bore and face of gears upto 500 mm dia in one setting

## Other

Conventional machines like lathes including CNC, Milling, Drilling, Slotting, Welding etc. which provide complete in-house facilities to manufacture gear units. These are also accompanied by checking instruments which confirm the top quality maintained in all manufacturing processes.

### CRANE DUTY HOIST APPLICATION



HOLLOW OUTPUT SHAFT GEARBOX



GEARED OUTPUT SHAFT GEARBOX

### HORIZONTAL GEARBOX WITH SOLID OUTPUT SHAFT

- Hardend & Ground Gearbox For Steel, Cement, Sugar & Other Industries.



**MODULAR GEARBOX**  
Hoist Application Gearbox of Compact Design.



**AERATOR GEARBOX**  
Gearbox for Effluent treatment plants.



**AIR COOLER GEARBOX**  
Gearbox for Cooling of Water Discharges From Refineries.



**CO-AXIAL GEARBOX**  
Stacker Reclaimers in Material Handling.



**TWIN SCREW GEARBOX**  
Extruder Machines for Plastic Industry.



**TURBINE GEARBOX**  
Power Generation.

[www.nuteckindia.com](http://www.nuteckindia.com)

[www.nuteckgears.com](http://www.nuteckgears.com)

## ORICON METALLURGICALS PVT. LTD.

At ORICON METALLURGICALS, We Believe 'Renewable Is the Future'.

Welcome to Oricon Metallurgical Private Limited, a pioneering resource recovery company founded in 2021, based in Chhattisgarh, India. Specializing in extracting valuable metals from scrap materials, we are committed to efficient resource utilization and a sustainable future. Investing in cutting-edge research and development, we're establishing an arc furnace and hydro metallurgical refining unit to reduce India's reliance on costly imports, saving millions of dollars and contributing to the local economy. Committed to "Make in India" and "vocal for local," we empower the nation through self-reliance and sustainable resource recovery practices. At Oricon Metallurgical, we're dedicated to shaping a greener, more sustainable future through innovative resource recovery solutions.



- OUR VISION** is to BE and BE recognized as new age metallurgist, transforming resource negative to resource positive.
- OUR MISSION** is to be a part of change engine that is driving the world to a circular economy.

We are excited to introduce Mular-30, which offers exceptional benefits in steelmaking efficiency. FeO recovery from Slag as well as Making the slag fluffy, with guarantee of zero clinker (jamming) formation. Improve minimum 1% yield of DRI.

Please find below a cost-benefit calculation using Mular:-

Parameter for one heat	Value	
Furnace Capacity	25 Tons	
Steel Made With Lumps and Pallets	20 tons	Assumed
FEO in Raw Material (@7%)	1.4 ton	Assumed
Fe in FeO is 77%	1.06 MT	By Chemistry
Mular Addition	100 kgs	Our Experience
Cost of Mular	₹17/kg	Landed price
Total Cost of Mular Addition per Heat:	₹17 x 100 kg	= ₹1,700
Steel Recovered with Mular	160 kgs	
Cost of Finished rolled product	₹50/kg	
Total Revenue from Steel:	₹50 x 160 kg	= ₹8,000
Net Saving per Heat:	₹8,000 - ₹1,700	= ₹6,300
Net Saving per Day (7 heats/day):	₹6,300 x 7	= ₹44,100
Net Saving per Month (30 days):	₹44,100 x 30	= ₹13,23,000
Net Saving per Year (12 months):	₹13,23,000 x 12	= ₹1,58,76,000



See for yourself how Mular can transform your slag-making process. Give us a call. **"Key to good steel making is to make a good Slag."**

[www.orimet.in](http://www.orimet.in)

## PHOENIX CONTACT INDIA PVT. LTD.

Phoenix Contact India Pvt. Ltd., founded in 1992 as a joint venture, is one of the sales subsidiaries and production locations in the Phoenix Contact Group. Customer proximity and satisfaction is the most important principle for 750 employees working all over the country. The company is constantly introducing innovative products into the market, setting trends in Industrial Automation, Machine Building, Energy, Railways, Building Automation, Telecom and Process industries with our 100000+ articles. From the beginning it was our endeavour to produce locally, thus during past 30 years we have created state of art manufacturing base, strongly supporting Made in India philosophy.

We have this production facility at Prithla-Dhatir Road near Delhi. Our production unit spread is in 20265 sq. mtr. approx. It is a hub for production



and logistics which coupled with Special Purpose Machines, bring new innovations in the market with enhanced efficiency.

From this production location we are manufacturing terminal block, Surge protection devices, cabling solution & connectors & a part of this manufacturing we are exporting to Germany.

Phoenix Contact India has been fulfilling its commitment of "Global Solutions – Local Presence" for the customers with its increasing number of regional offices in important cities including Mumbai, Pune, Bengaluru, Ahmedabad, Kolkata and Chennai. An experienced team of product specialist and regional engineers are working closely together to offer timely support to our customers in major cities of the country along with a dedicated network of more than 250 channel partners approx.

**Power Reliability** is the Key aspect where Phoenix Contact Focuses for a Control Cabinet.

**Power Solutions** provides products with a wide range of performance classes & features ensuring your systems run smoothly, efficiently, and without interruption

The complete solution for 24 V: QUINT power system



Phoenix Contact provides complete power solutions to ensure superior system availability with cutting-edge technology and exceptional quality.

Power Supplies are the heart of any control panel & play a vital role in continuous System Availability. The Multi-Functionality Portfolios of QUINT, TRIO, UNO, and STEP power product families are designed to meet these demands.

Our portfolio includes Power Supplies (AC/DC), DC/DC Converters, Redundancy Modules & DC – UPS Solutions with Battery & Capacitor Banks, all engineered to match the functional and design needs of diverse industries.

**Power Reliability** is the Key aspect where Phoenix Contact Focuses for a Control Cabinet.

**System Protection** is One of the key areas to ensuring systems run smoothly & efficiently.



Phoenix Contact is a Market Leader in India for the development and manufacturing of Make in India Surge Protective Devices. Decades of experience and intensive fundamental research are the foundation for our technological expertise, hence making us the Most Trusted Brand in the field of Surge Protection Devices.

Our products for the operational safety of electrical systems, installations and devices enable you to effortlessly create an uninterruptible and clean power, as well as a stable data connection with our coordinated product portfolio of Signal, Data & Transceiver surge protection Along with Device Circuit Breakers and EMC Filters.

**The MARKING system** portfolio provides a comprehensive system solution for simple and efficient marking processes – consisting of intuitive marking software, powerful marking systems, versatile identification solutions, and comprehensive services.

Laser marking describes the process of marking the marking materials with laser technology. Here, a focused laser beam is guided over the component to be marked. The energy of the laser beam hitting the component triggers a reaction, leaving a resistant and permanent marking. Depending on the material, there are various options for creating the contrast required with the base material.



The TOPMARK NEO can quickly and easily create marking materials for use in industrial applications. The TOPMARK NEO processes a diverse range of materials in card and sheet format for marking of plastic and metal labels for terminals, conductors, cables, devices, and plants.

Industrial connectors from Phoenix Contact protect your interfaces and ensure the reliable transmission of power, data, and signals even under the harshest conditions. The industrial connectors are resistant to dirt, water, vibrations, and high levels of mechanical strain. The heavy-duty connectors have a seal rating of up to IP69K. Outdoor M12 cabling is constantly exposed to extreme conditions: UV radiation, ozone



pollution, extreme heat, extreme cold, and sudden changes in temperature. In addition, the cabling must withstand strong jet water, various types of oil, vibrations, and shocks.

Phoenix Contact offers a complete portfolio of hand tools for cutting, stripping, crimping, screwing, and measuring for industrial use. Our hand tools are all about quality, precision, durability, and effectiveness.



The hand tools ensure a uniform quality of workmanship with specially hardened tool steels. If you use our tools consistently, you will benefit from ergonomically designed handles and special design features that reduce the amount of manual force required.



1000V AC & 1500V DC tests in accordance with EN60900.

Ferrules certified in accordance with the UL standard (UL486F & DIN standard 44288-4) in combination with a selection of crimping tool and automatic crimping devices.

[www.phoenixcontact.co.in](http://www.phoenixcontact.co.in)

## PLASTIC ABHIYANTA

Plastic Abhiyanta - Engineering Plastic Solutions for Heavy Industry With over five decades of expertise, Plastic Abhiyanta is India's leading manufacturer of engineering plastic components for the iron, steel, cement, power, and mining industries. Backed by four advanced manufacturing units, precision CNC-equipped tool rooms, and a skilled team of 250+ professionals, we offer high-performance solutions under our trusted Anulon range. From bushings, liners, and seals to membrane filter plates and wear components, our products are engineered using high-grade polymers like UHMWPE, Nylon, and PTFE-ensuring reliability in the most demanding environments. Known for our innovation, customization, and technical support, we are trusted by industry giants across India. Visit us at ISME Kolkata to explore how Plastic Abhiyanta is redefining polymer engineering.



At Plastic Abhiyanta, we take pride in offering a wide range of engineering nylon products designed to perform under demanding industrial conditions. Known for their high mechanical strength, wear resistance, and excellent machinability, our nylon components are ideal for applications in steel plants, automotive, material handling, and packaging industries. From nylon bushings, wear pads, and rollers to custom-machined profiles, we manufacture precision-engineered solutions tailored to our clients' requirements. Our Anulon range of nylons provides low friction, self-lubrication, and high impact resistance, making it a reliable alternative to metal. Backed by decades of expertise, Plastic Abhiyanta continues to lead in innovative nylon engineering solutions.



Continuing our commitment to high-performance polymer solutions, Plastic Abhiyanta also offers polymer liners for hoppers and chutes, designed to handle abrasive, sticky, or high-volume material flow in industries like steel, cement, mining, and power. We manufacture liners using premium materials such as UHMWPE (Ultra High Molecular Weight Polyethylene), HMHDPE (High Molecular High-Density Polyethylene), and other wear-resistant engineering plastics.



These liners significantly reduce material build-up, wear, and maintenance downtime, ensuring smooth, continuous flow and extending equipment life.

Plastic Abhiyanta caters to a wide range of applications across various departments in an iron and steel plant. From RMM (Raw Material Handling) to Sintering, Coke Oven, Blast Furnace, LD Converter, Continuous Casting (CCM), and CRM/PLTCM, we supply precision-engineered plastic components tailored to harsh





environments. Our Anulon range includes bushings, seals, washers, liners, filter plates, wear strips, and custom profiles made from UHMWPE, Nylon, PTFE, and more. These products reduce wear, friction, and downtime while improving efficiency and safety. With in-house tooling, custom molding, and CNC machining, Plastic Abhiyanta delivers reliable, cost-effective polymer solutions plant-wide.

Innovation and on-site troubleshooting are at the core of our service approach. We work closely with plant engineers and maintenance teams to identify wear-prone, high-friction, or failure-prone areas, and offer custom-engineered polymer solutions that enhance performance and reduce downtime. Whether it's replacing traditional metal parts with Anulon-engineered plastics or redesigning components for better life and efficiency, our team is constantly innovating to solve real-time challenges. Our products help eliminate lubrication needs, resist corrosion, and absorb impact—making them ideal for tough environments. From concept to installation, Plastic Abhiyanta is your partner in plant-level problem solving and improvement.



Choosing Plastic Abhiyanta means choosing consistency, quality, and trust. Unlike many in the market, we use only high-grade, performance-verified polymers—each time, every time. Our Anulon range is formulated for superior wear resistance, strength, and chemical stability, ensuring longer service life even in the most demanding industrial conditions. What truly sets us apart is our dedicated technical service—we don't just supply parts; we understand the application, recommend better materials, and often help improve original designs. Backed by decades of experience and trusted by industry giants across steel, cement, and mining sectors, Plastic Abhiyanta delivers reliable solutions with unmatched customer support.



Plastic Abhiyanta proudly operates four state-of-the-art manufacturing facilities equipped with modern tool rooms, advanced CNC machining, and precision molding capabilities. Our infrastructure is designed to deliver high-quality, high-accuracy components tailored to diverse industrial needs. We work exclusively with the best-in-class raw materials, ensuring every product meets stringent performance standards. With a skilled team of over 250 professionals, including engineers, machinists, and polymer experts, we handle complex challenges with speed and efficiency. This robust capacity, combined with decades of experience, has made Plastic Abhiyanta India's largest and most trusted name in the engineering plastics space, serving top industries across the country.



[www.anulon.com](http://www.anulon.com)

## PNEUMATIC POWER TOOLS & CO.

PNEUMATIC POWER TOOLS & CO. is an ISO 9001:2015 certified indigenous manufacturer and exporter, proudly marking 50 years of excellence since its establishment in 1975. Headquartered in Kolkata, West Bengal, the company operates five manufacturing units in Kolkata, West Bengal and employs approximately 150 highly skilled professionals. With a strong domestic presence across India, we also export our products to international markets, including Europe, the United States, Canada, Australia, and countries in the Middle East and Asia etc. Our commitment to quality, innovation, and customer satisfaction continues to drive our growth on the global stage.



Products: Pneumatic, Battery & Manual operated Strapping Tool, Hydraulic & Battery Operated Rod Cutter, Hydraulic Bar Straighteners, Hydraulic Upset Testing machine, Wire Coil Wrapping Machine, Machined Component etc.

### PNEUMATIC OPERATED STRAPPING TOOL

- Pneumatic Combination Tool
- Model No.: CS-114S2
- Make-PPT

- Strap thickness – 0.79 mm – 0.89 mm / 0.031" – 0.035"
- Strap width – 31.75 mm / 114/ "
- Operating Air pressure – 6.0 – 6.5 kg/cm2
- Tension Achievable – 7,100 N / 1600 lb
- Grade - High Tensile, Painted and Waxed Strap



Note: This Tool Perform Tensioning sealing & Cutting in one Operation.

### BATTERY OPERATED STRAPPING TOOL

#### A) Battery Operated Tensioner

- Model No. PTB-2025
- Make-PPT
- Strap thickness – 0.8 - 1.2 mm / 0.031" – 0.047"
- Strap width – 31.75 mm / 114/ "
- Grade - High Tensile, Painted and Waxed Strap
- Max Tension Achievable - ≤ 6 KN
- Battery - Lithium Batteries 4.0 Ah 18 V (BOSCH MAKE)
- NET Weight - 4.8 kg / 10.58 lb (approx.)



#### B) Battery Operated Sealer

- Model No. PSB-2025
- Make-PPT
- Strap thickness – 0.8 - 1.2 mm / 0.031" – 0.047"
- Strap width – 31.75 mm / 114/ "
- Grade - High Tensile, Painted and Waxed Strap
- Battery - Lithium Batteries 4.0 Ah 18 V (BOSCH MAKE)
- NET Weight – 3.1 kg / 6.8 lb (approx.)



### MANUAL STRAPPING TOOL

#### A) Compact feed wheel Pusher Type Manual Tensioner

- Model No.: PFT-114
- Make – PPT
- Strap thickness – 0.64 mm – 0.89 mm / 0.025" - 0.035"
- Strap width – 19.5 mm – 31.75 mm / 34 " - 114/ "
- Grade - High Tensile, Painted and Waxed Strap
- NET Weight – 4.4 kg / 9.7 lb (approx.)



#### B) Manual Sealer

- Model No.: SMDR-32
- Make – PPT
- Strap thickness – 0.79 mm – 0.89 mm / 0.031" – 0.035"
- Strap width – 31.75 mm / 114/ "
- Grade - High Tensile, Painted and Waxed Strap
- Joint Type: Double Notch Reverse type (Up Cut) Side action.
- NET Weight – 4.5 kg / 9.9 lb (approx.)



### HYDRAULIC ROD CUTTER

- Model No.: HRC- 50S
- Make- PPT
- Cutting range – Up to 50mm dia.
- Force – 141390 kgf. @ 450 bar Working pressure.
- Tensile Strength for Rod Dia. 50 mm – 110 kg/mm<sup>2</sup>



### BATTERY OPERATED REBAR CUTTER

- Model No.: HRCF-20
- Make- PPT
- Cutting Range – Rod dia. 4-20 mm
- Cutting Speed - 5-6 s



- Reinforcement Hardness - 40CR-A3
- Hydraulic Oil - ISOVG46
- Battery - DC 18 V 4.0 Ah (BOSCH MAKE)
- NET Weight : 8 kg

#### HYDRAULIC BAR STRAIGHTENER

- Model no.: HBS-40
- Make – PPT
- Capacity: Rod Size 0.5 to 40mm dia.
- Heavy duty high efficiency Power Pack unit used.



Note: Unique design of Die and punch, special steel used for longer life

#### HYDRAULIC UPSET TESTING MACHINE

Hydraulic Cold Upset Press

- Model No.: PHUP-30
- Make - PPT
- Load: 400 Ton /500 Ton
- Material Tensile Strength: Up to 200BHN (Max.)
- Reduction in Length: 80% (Max.)
- First and Free Approach Speed: 15 to 20 mm/sec.
- Pressing Speed: 4mm/sec. (Approx.)
- Return Speed: 20 to 30mm/sec.
- Stroke Length: 90-100mm.
- Working Pressure: 315Bar.
- Cylinder: Double Acting system.
- Cylinder Assembly: Will be mounted on the top of the Press.
- Pump: Radial piston pump. / Vane Pump.
- Valve System: Operated by Sol. Controlled D.C. Valve.
- Hydraulic Oil Grade: Servo 68 or Equivalent.
- Operated by: Electrical Controller System.
- Method of Operation: Semi-Automatic Electromechanical Control System.



#### WIRE COIL WRAPPING MACHINE

Vertical Wire Coil Wrapping Machine

- Model No.: CMW-1000V
- Make – PPT
- INNER DIA - 450mm to 800 mm / 17.71" to 31.49" (Minimum to Maximum)
- OUTER DIA - 750mm to 1000 mm/ 29.52" to 39.37" (Minimum to Maximum)
- WIDTH - 100mm to 500 mm/ 3.93" to 19.68"
- COIL WEIGHT - 100-500 Kg/ 220.46-1102.31 lb.
- CUTTER - HSS Material make cutter.
- ROLLER - PU Roller fitted with Bearings.
- CONTROL SYSTEM - Compact Electrical Control Panel "Fitted with VVVF Drive, Overload Relay, MCB, Indicator, ON-OFF Switching, Transformer".
- Machine Needed Power: 3 Phase + Neutral + Earthling (415 V, AC 50 Hz)
- Number of Motor - 3 Nos.
- Motor Power: Motor 1 – 3 HP      Motor 2 - 3 HP      Motor 3 – 5 HP
- Total Motor Power - 11 H.P



#### MACHINE COMPONENT

Finished Machine Component as per customer Bulk requirement.



## PRIMA EQUIPMENT, INDIA

PRIMA EQUIPMENT is a trusted designer, manufacturer, and exporter of advanced Pollution, Safety, and Environmental Monitoring Equipment, proudly serving Indian and global markets for over 32 years.



We offer a wide range of innovative solutions including QAL1 tested CEMS, CAAQMS, VOC analysers, flue gas analysers, portable & fixed gas detectors, toxic gas analysers, and indoor air quality systems.

With a strong focus on in-house R&D, CE/TUV-certified products, and application-based customization, we ensure high reliability and performance across diverse industrial environments.

With over 6400+ successful projects and a presence in 32+ Indian states and 6+ countries, PRIMA is committed to providing prompt after-sales service, expert technical support, and continuous innovation.

At PRIMA, we are concerned about the most cherished dream in the world – LIFE.

Our vision is to create a cleaner, safer, and more sustainable world through technology-driven environmental and workplace safety solutions.

For News & Updates, please visit <https://linktr.ee/prima.sales>

#### CONTINUOUS EMISSION MONITORING SYSTEM (CEMS) FOR GAS

The PSGM-1-D-AGS is a QAL1-tested Continuous Emission Monitoring System (CEMS) and the world's only Indian product fully designed, developed, and manufactured in India.

It provides real-time, accurate monitoring of gases such as SO<sub>2</sub>, NO<sub>x</sub>, CO, HC, and other process-specific emissions.

Engineered to meet international standards, the system delivers reliable, continuous data to ensure regulatory compliance.

With advanced sensors and automated operation, the PSGM-1-D-AGS enables industries to monitor emissions effectively across a wide range of applications-supporting transparency, accountability, and environmental sustainability without interfering with the process & provide accurate feedback to emission control systems.



#### CONTINUOUS EMISSION MONITORING SYSTEM (CEMS) FOR DUST

The PE-SPMMS-C91 is a high-precision Particulate Matter Monitoring System designed for continuous and real-time monitoring of dust emissions from industrial stacks.

It provides accurate and consistent data, critical for regulatory compliance.

Built to withstand harsh industrial environments, it ensures long-term, stable performance with minimal maintenance.

Its robust design and high sensitivity make it ideal for use in cement plants, thermal power stations, steel industries, and other dust-generating operations.

The PE-SPMMS-C91 supports industries in tracking particulate emissions effectively, promoting cleaner emissions and sustainable environmental practices.



#### CONTINUOUS AMBIENT AIR QUALITY MONITORING SYSTEM

The CAAQMS is designed for outdoor industrial applications to continuously monitor ambient air quality.

It measures over 18 critical parameters, including SO<sub>2</sub>, NO<sub>x</sub>, O<sub>3</sub>, CO, CO<sub>2</sub>, VOCs, BTEX, PM<sub>10</sub>, PM<sub>2.5</sub>, PM<sub>1</sub>, odour, temperature, humidity, and pressure.

Equipped with advanced air samplers and sensors, CAAQMS provides accurate, real-time data on pollutant levels around industrial sites.

This system supports regulatory compliance and helps industries identify pollution trends, enabling timely corrective actions to minimize environmental impact and protect public health effectively.



#### PERSONAL SAFETY GAS DETECTORS

The PGD-X (single-gas) and PGD Max (multi-gas) detectors are essential for ensuring health and safety in industrial work environments.

Designed with cutting-edge technology, our portable gas detectors provides immediate and reliable alerts on detection of hazardous, toxic, combustible or

oxygen gas or Volatile Organic Compound, ensuring protection for your facility and personnel.

With its robust construction, user-friendly interface, seamless integration and connection capabilities, PGD-X & PGD MAX delivers reliable performance and peace of mind.

Key gases detected include O<sub>2</sub>, CL<sub>2</sub>, HCL, VOCs, combustible gases, SO<sub>2</sub>, HCN, COCL<sub>2</sub>, NH<sub>3</sub>, HF, HC, H<sub>2</sub>, H<sub>2</sub>S, and more.

#### FLUE GAS MONITOR

The FGM Model, is ideal for combustion efficiency monitoring in boilers, furnaces, heaters, and kilns.

It accurately measures O<sub>2</sub>, CO, CO<sub>2</sub>, flue/ambient temperature, excess air, and net/gross efficiency, helping to optimise fuel consumption and reduce emissions.

Optional gases include SO<sub>2</sub>, NO, NO<sub>2</sub>, and HC.

The microprocessor-based system features auto/manual sampling, built-in data logging, fuel-based efficiency calculations (standard & custom), and a rugged gas-temp probe with filter and cooler.

Auto oxygen calibration and report generation enhance convenience. Battery-powered and user-friendly, FGM ensures reliable, real-time combustion analysis.



[www.primaequipment.com](http://www.primaequipment.com)

#### PSPN AUTOMATION

We are a 12 years old Process Control and Automation Distributor, specialising in Factory Automation, design & manufacturing of controls systems & panels systems & field instruments/ sensors based Process Solutions.

We have long standing Partnership with Brands like Eurotherm, Watlow, UWT and General make Elements and Gauges.



We have been building our expertise over the years for Industries like Heat Treatment, Steel & Metal, Glass, Chemical, Food & Beverages, Power, Refineries and Oil & Gas. We focus on sustaining our customers by providing accurate and cost-effective products with multiple features, Security & advanced technologies.

Our interactive Marketing, Engineering and Process Expert team supports the customers to get a maximum value on investments and understand process requirements and complexities, to design the solutions to handle such complexities through mathematical modelling. We have the technical knowledge and project management capabilities to create, plan, and implement feasible Control & Process Monitoring solutions for Industrial applications.

We are a MSME registered Organisation, who have an added advantage of CRISIL verified Business Process. With Instrumentation & Electrical Process controls becoming intelligent and the coming of IoT, there are unprecedented possibilities in enhancing quality management to the benefit of Industrial consumers.

#### Our Vision/Mission:

- To stay at the forefront of technology & Process Solution in all our areas of endeavour.
- To focus on Customer feedback to improve our products and create more value for our customers.
- To never compromise on quality for price, even at the risk of losing business.
- To always put our customers and our partners above everything else.

- To strive to become the best player in all our areas of business.

We are registered Vendor with IOCL, ONGC, OIL, NTPC, Ordinance Factory Board, SAIL, NSPCL, JSPL, LINDE, ITC, TATA Steel and various other renowned Industrial manufacturers. We have executed several Projects with above mentioned Organisation and successfully implemented various challenging Process Control & Automation Solution.

#### EUROTHERM

##### PID CONTROLLERS, INDICATORS AND ALARM UNITS

- Single Loop Controllers
  - piccolo™ Series, P104, P108 & P116
  - 3000 Series, 3204, 3208, 32h8 & 3216
  - EPC3000 Series, EPC3004, EPC3008 & EPC3016
- Modular DIN Mount Controller
  - EPC2000
- Advanced and Multi Loop Controller
  - nanodac™
  - 3000 Series, 3504 & 3508
  - 2000 Series, 2604 & 2704
  - Mini8™
- Indicators and Alarm Units
  - 3000 Series, 3204i, 32h8i & 3216i
  - 2000 Series, 2408i
- Melt Pressure Controller
  - piccolo™, P304C
- Melt Pressure Indicator
  - piccolo™, P304I
- Software
  - Configuration software, iTools
  - Data Viewing/Reporting, Data Reviewer



##### RECORDERS AND DATA MANAGEMENT

- Paperless Graphic Recorders
  - 6100A, 6180A, 6100XIO, 6180XIO,
- Portable TUS Recorders
  - 6100A & 6180A
- Recorder / Controller
  - Nanodac™
- Scalable Recorder
  - Versadac™
- Software
  - 6000 Series software, Bridge
  - Data Viewing/Reporting, Data Reviewer



##### SOLID STATE RELAYS (SSRS) AND SIMPLE THYRISTOR CONTROLLER

- Panel Mount Solid State Relays
  - ZELIO™ SSP1 & ZELIO™ SSP3
- DIN Rail Solid State Relays
  - ZELIO™ SSM1 & ZELIO™ SSM3
- Simple Thyristor Controller
  - Eswitch



##### POWER CONTROL

- Single Phase
  - Efit™
- Single & Multi Phase
  - EPack™ Lite & Epack™
- Multi Channel
  - Epower™





- Software
  - Configuration software, iTools

#### MACHINE CONTROL AND PROCESS AUTOMATION

- Programmable Automation Controllers
  - Visual Supervisor, Eycon™ 10 & Eycon™ 20
  - PAC, T2750 T2550
- Programmable Logic Controllers
  - Compact PLC, E+PLC100
  - Modular PLC, E+PLC400
- Software
  - Combination PLC software, CODESYS®



#### EUROTHERM SYSTEM SOFTWARE

- Configuration tools
  - Project Studio / Developer
- Visualization Packages
  - Process Viewer & Operation Server and Viewer
- Data Reporting
  - Information Manager, Wonderware Historian client & Dream Report™
- Network support
  - OPC Servers and I/O Drivers
- Applications
  - Security Manager & Eurotherm Control and Application Modules



#### PROBES

- In-Situ Carbon Probe AP1, ACP Carbon Probe & Air Reference Panel

#### WATLOW

#### RTDS THERMOCOUPLES HEATERS

- Resistance temperature detectors (RTDs)
- Thermocouples
- Industrial heaters



#### GEFRAN

#### LOAD CELLS

Load cells (Compression, Shear, Traction / Compression, Deflection), Sensormate load cells.

#### PRESSURE TRANSMITTER

- Pressure transmitter Flush Diaphragm
- Pressure transmitter Standard Diaphragm Sill 2
- Pressure transmitter Standard
- Pressure transmitter for application in Hazardous Areas



#### MELT PRESSURE SENSOR

- Melt Pressure Sensor (Fluid Free (I Series), Oil-filled (W Series),
- Mercury filled (M Series), Sodium-Potassium filled (K Series)

#### TRANSDUCER CONTACTLESS MAGNETO-TRICTIVE

- Transducer Contactless Magnetostrictive Rod Design
- Transducer Contactless Magnetostrictive Profile Design
- Position Transducer Potentiometers Long stroke
- Position Transducer Potentiometers Short stroke
- Position Transducer Potentiometers Rotaries
- Position Transducer Potentiometers Magnetic Drag



- Position Transducer Potentiometers Exposed Tracks

#### INDICATOR

FORCE, PRESSURE and DISPLACEMENT TRANSDUCERS INDICATOR with INPUT for STRAIN-GAUGE or POTENTIOMETER - ALARM UNITS Main applications.



#### INCLINOMETER/ TILT SENSOR WIRE POSITION SENSOR / ROTARY SENSOR

- General single/dual axis inclinometer (xy/360°)
- Wire position transducer (wire potentiometer)
- Hall-effect wire position transducer (contactless)
- Orifice



#### FLOW METER TRANSMITTER

- Ventury flow meter
- Ultrasonic flow meter
- Coriolis flow meter
- Oval wheel flow meter
- Positive displacement flow meter
- Electromagnetic flow meter
- Pressure transmitter
- Differential pressure transmitter



[www.pspnautomation.in](http://www.pspnautomation.in)

#### REVA INDUSTRIES INDIA PVT. LTD.

Reva Industries, founded in 1963 by Balraj Goel, began in a garage. From humble beginnings to 250-ton manufacturing. Overhead cranes are exciting and difficult. After a lot of hard effort, Reva became recognised for quality and timely delivery, winning accolades and being called TURNER Brothers.



Reva Industries' success is due to team's commitment. Their dedication to excellence and innovation has helped them succeed in the business.

Reva Industries, A leading crane manufacturer, specialize in designing, manufacturing, and servicing of high-quality Double Girder EOT Cranes up to 250T ; Single Girder EOT Cranes up to 25T ; Underslung Single Girder EOT Cranes up to 25T ; Electric Wire Rope Hoists up to 50T ; Jib Cranes up to 10T ; Goliath Cranes up to 100T that are built to last and perform.



DOUBLE GIRDER EOT CRANE



SINGLE GIRDER EOT CRANE



ELECTRICAL & MANUAL HOIST



GOLIATH CRANE & GANTRY CRANE



JIB CRANE

WINCH & TRAVERSER

[www.revacranes.com](http://www.revacranes.com)

## ■ SPEED-O-CONTROLS PVT. LTD.

Speed-O-Controls Pvt. Ltd, Introducing ourselves as leading manufacturers of crane control gears. We have developed our roots in this field from last two and half decade. We have committed to quality, productivity and customer service.

**SPEED-O-CONTROLS  
PVT. LTD.**  
**CRANE CONTROL SOLUTIONS**

Speed-O-Control is an integrated association of Engineers. Project Management Specialists and Designers possessing specialized experience in Material handling Industry specially EOT Cranes.

The company can accept full engineering responsibility for a project with respect to control gear from preliminary market studies to completion of project & operational management -or it can handle only one specific phase to supplement the special needs of the client's own engineering staff.

Speed-O-Control has established a proud reputation in the market place, as a quality conscious supplier of customer specific products. We support and service a demanding customer base in the EOT Cranes, Hoist & other Mobile Machinery with an emphasis on achieving world-class quality at competitive prices.

**Radio Remote** is a wireless handheld device used to control Electric Overhead Traveling (EOT) cranes. Featuring durable, easy-to-use push buttons, it allows operators to safely manage crane functions such as lifting, lowering, and traversing from a distance.



Designed for industrial use, it enhances safety by keeping operators away from hazardous zones and improves efficiency with precise, responsive controls. The system includes a transmitter and receiver, uses encrypted signals to avoid interference, and often comes with features like emergency stop, rechargeable batteries, and weather-resistant housing for reliable performance in harsh environments.

## DSL Power Distribution Systems

are essential for supplying and managing electrical power to (EOT) cranes. These systems include components like DSL (down shop lead) bus bars, cable trolleys, festoon systems, and current collectors, ensuring continuous and reliable power delivery during crane operation. Designed for high performance and safety, they support smooth movement of the crane along its track while minimizing power loss and maintenance. Ideal for industrial environments, these systems are built to withstand heavy-duty usage, harsh conditions, and ensure efficient, uninterrupted crane operation with minimal downtime and optimal energy distribution.



## EOT Crane Flameproof Equipment

is specially designed for use in hazardous environments where flammable gases, vapors, or dust may be present. These components-such as flameproof control panels, limit switches, motors, and push-button stations,



brakes, Radio Remotes-are built to prevent ignition of surrounding explosive atmospheres. Certified for use in IIA,IIB and IIC Zones, they ensure safe and reliable crane operation in industries like petrochemical, mining, and pharmaceuticals. The equipment maintains full functionality while containing any internal sparks or flames, thereby enhancing safety without compromising performance. Robust construction and compliance with international safety standards make them ideal for critical applications.

**Load Cells and Dynamometers** are precision instruments used to measure and monitor the lifting load during crane operations. Integrated into the crane's lifting mechanism, these devices provide real-time load data to prevent overloading, enhance safety, and ensure efficient material handling. Load cells convert force into electrical signals, while dynamometers display the actual weight being lifted.



They are essential for industries requiring accurate load measurement, offering features like digital displays, wireless data transmission, and overload alarms. Rugged and reliable, they improve operational control, reduce the risk of equipment damage, and help comply with safety regulations.

## Crane controllers

are essential devices used to operate and manage the functions of cranes, including hoisting, lowering, and moving loads. These controllers typically feature push buttons, joysticks,, allowing operators to precisely control crane movements from a distance. Designed for safety and reliability, crane controllers often include overload protection, emergency stop functions, and speed adjustments. They are durable and built to withstand challenging industrial environments. With advanced features like wireless operation and integration with automation systems, crane controllers enhance efficiency, safety, and productivity in material handling applications across various industries.



## Crane Limit Switches

are safety devices used to control and limit the movement of Electric Overhead Traveling (EOT) cranes. They are installed at critical points on the crane to prevent over-travel or over-extension of the crane's hoist, trolley, or bridge. When the crane reaches a predefined limit, the switch activates, stopping further movement to protect the equipment and avoid accidents. These switches help ensure safe operation, reduce wear and tear, and prevent potential damage to the crane. Available in various designs, EOT Crane Limit Switches are crucial for enhancing safety and operational efficiency in industrial environments.



[www.speedocontrols.com](http://www.speedocontrols.com)

## ■ SPRINT ENGINEERING PVT. LTD.

Sprint Engineering is an old established company in India with experience of over 5 decades in Cranes Electric Hoist & allied Equipment manufacturing. We make various types for the industry with specialization in steel Melting shops, Hot & Cold Rolling mills, Tube mills, Blast furnaces, Pellet & sinter plants, Beneficiation plants, Injection Moulding Industries, Paper, Power & Sugar industries.

**SPRINT**  
CRANES & HOISTS

Our Range of products Single Girder EOT Cranes, Double Girder EOT Cranes, Gantry Cranes, Jib Cranes, Electric Hoist, Transfer Trolleys, Freight Elevators and Crane & Hoist spares including Thruster Brakes, Disc brakes, Gear boxes. In addition, we can provide a range of accessories including Radio Remote Controls, Electronic Overload Protection and Load Cell/ Weighting System with Digital Displays.

Our Head office is located in New Delhi & our 3 Factories are located in Gurgaon.



### Double Girder EOT (Electric Overhead Traveling) Cranes

are robust lifting systems used for heavy-duty material handling in industrial environments. They feature two parallel bridge girders supported on end trucks, with a crab (trolley and hoist) running on top. This design provides high load capacity, greater stability, and extended lifting height compared to single girder cranes. Ideal for applications in steel plants, warehouses, and large manufacturing units, they offer efficient, reliable performance for lifting loads typically ranging from 0.5 to 250 tons. Customizable with features like radio control, variable speed, and automation.



### Single Girder EOT (Electric Overhead Traveling) Cranes

are cost-effective and efficient lifting solutions used for light to medium-duty material handling. They consist of a single bridge girder supported on end trucks, with the hoist traveling on the bottom flange of the girder. Suitable for capacities up to 40 tons and moderate spans, these cranes are ideal for small workshops, warehouses, and maintenance applications. They require less space, have lower dead weight, and are easier to install and maintain compared to double girder cranes. Optional features include radio remote control, variable frequency drives, and overload protection.



**Gantry Cranes** are versatile material handling systems used for lifting and moving heavy loads, typically in outdoor applications or areas without overhead crane runways. They consist of a horizontal beam (girder) supported by vertical legs that move on ground-level rails or wheels. Available in single or double girder configurations, gantry cranes are ideal for construction sites, shipyards, and container yards. They offer flexibility in mobility, easy installation, and cost-effective operation. Capacities range from 0.5 - 250 tons, and they can be customized with features like cantilevers, motorized travel, and remote controls for improved efficiency and safety.



An **Electric Hoist** is a lifting device powered by an electric motor, used to raise, lower, and move heavy loads with ease and precision. It typically consists of a motor, drum or chain wheel, wire rope or chain, and a hook for load attachment. Electric hoists are commonly used in factories, warehouses, construction sites, and workshops for material handling. They come in various types, such as chain hoists and wire rope hoists, and can be mounted on fixed supports or traveling trolleys. Key features include compact design, smooth operation, overload protection, and easy integration with cranes or monorail systems.



A **Jib Crane** is a compact and versatile lifting device used for localized material handling in workstations, warehouses, and production lines. It features a horizontal jib or boom that supports a hoist and can rotate to lift and move loads within a circular area. Mounted on floors, walls, or columns, jib cranes offer capacities typically 0.5 to 15 tons and rotation angles from 180° to 360°. They are ideal for repetitive lifting tasks, enhancing efficiency and reducing manual effort. Easy to install and operate, jib cranes are commonly used for loading/unloading materials, assembly operations, and maintenance tasks in confined spaces.



[www.sprintindia.com](http://www.sprintindia.com)

## ■ SRO BHARAT (A UNIT OF SHRI RAM OVERSEAS)

With over 40 years of expertise, SRO Bharat prides itself on being a trusted partner for industries worldwide. Our commitment to excellence and quality has earned us a robust reputation. At SRO, we recognize the critical role bearings play in ensuring seamless operations across various industries including Steel Rolling mills, Stone Crusher, Paper, Sugar, Automotive, Electric Motors and more. We offer a diverse range of high performance bearings crafted to meet stringent industry standards, available at competitive prices.



Here, other than Bearings Distribution we have a wholesome array of associated products to offer which include Bearing Sleeves, Bearing Housings, Roller Chains, Mounting and Dismounting Tools, Maintenance Products, Condition Monitoring Equipment's, Grease and Oil seals.

We aim to connect with industry professionals to share insights and foster innovation. SRO Bharat is known for its unmatched quality, affordability, and customer satisfaction. Our diverse product range, ready stock availability, and dedicated workforce has added value to the lives of our customers and

### PRODUCT RANGE

- Bearings
- Grease
- Housings
- Other Allied Products
- Roller Chains

### CORE PURPOSE

Quality is the foundation of our brand SRO Bharat. We believe that our high-quality bearings contribute to the efficiency, reliability & overall progress of our customers' machinery & applications.

### CORE VALUES

High Performance Quality, Precision Excellence, Customer Centricity, Integrity and Ethics, Continuous Learning & Adaptability and Team Work.

### INDUSTRY WE EMPOWER

- Steel Plants
- Mining
- Sugar Plants
- Crusher Industry
- Agricultural Machines
- Other Industries
- Cement Plants
- Power Plants

### SPHERICAL ROLLER BEARINGS

These bearings are designed to accommodate heavy radial loads and axial loads in both directions. They have barrel-shaped rollers and can come with steel or brass cages to provide durability and high load capacity. Their self-aligning capability makes spherical roller bearings ideal for use in heavy-duty and high-load applications across various industries.



### MULTI ROW BEARINGS

Multi-row bearings are designed to handle heavy radial loads. These bearings consist of multiple rows of rolling elements, which distribute loads more evenly and provide enhanced stability. Multi row bearings are commonly used in applications that require high load capacity and precision.



### TAPERED ROLLER BEARINGS

Tapered roller bearings are designed to handle both radial and axial loads by using conical rollers providing support for rotating shafts in one direction. They are available with steel or brass cages for various industrial applications.



### PILLOW BLOCK / PLUMMER BLOCK

Pillow block bearings, also known as Plummer block bearings, are mounted bearing units that consist of a bearing installed in a housing, designed to provide support for a rotating shaft. The housing is typically bolted to a foundation, which provides stable and secure support. These bearings are essential in various applications due to their ability to handle heavy loads and ease of installation.



### DEEP GROOVE BALL BEARINGS

Deep groove ball bearings are the most common type of ball bearings and are widely used in various applications due to their simplicity, versatility, and high performance. These bearings have deep raceway grooves in both the inner and outer rings, which allow them to support radial loads and moderate axial loads in both directions.



### CYLINDRICAL ROLLER BEARINGS

Cylindrical roller bearings consist of cylindrical rollers that provide high radial load capacity, optimal load distribution, and minimize friction. These bearings are ideal for high-speed applications due to their ability to accommodate large radial loads and their low-friction design.



[www.srobearings.com](http://www.srobearings.com)



## UNICON ENGINEERS

We are an ISO certified company name as UNICON ENGINEERS. We are into AIR POLLUTION CONTROL EQUIPMENT like ESP (Electrostatic Precipitators), BAG FILTER HOUSES and Other Material Handling Systems like Ash Handling Systems, Fuel Handling Systems, Coal handling Systems, Pneumatic Conveying Systems etc. We are enclosing herewith our company catalogues and Company Profile for your kind perusal.



The below are our regular offerings in the market

- ESP (Electrostatic Precipitator)
- Upgradation of existing ESPs to meet the stringent Air Pollution Control norms and Spares for all make of ESPs.
- Bag Filters / Bag houses / DE Systems / Dust Extraction Systems / Dedusting Systems.
- Pneumatic Conveying System / Ash Handling Systems
- Double Cone Valves, RAV/RAL, Slide Gates, Clam Shell Gates, Dome Valves, Double flap Valves, etc.

[www.uniconinter.com](http://www.uniconinter.com)

## VZEN INDUSTRIES PVT. LTD.

India's Leading Manufacturer of Premium Quality Industrial Lubricating Oils & Automotive Oils



Vzen Industries Pvt. Ltd. is a premier Indian manufacturer of high-caliber industrial fuel oils, including LDO, Furnace Oil, LSHS, MTO, Biodiesel Oil, and Lubricants. Our organization adheres to rigorous quality control standards, ensuring unparalleled product excellence and service consistency. This commitment to excellence is underscored by our ISO 9001, ISO 14001, and ISO 45001 certifications.

Leveraging our extensive expertise and cutting-edge Research & Development Laboratory, Vzen Industries Pvt. Ltd. delivers tailored, high-performance lubricant, grease, and fuel oil solutions designed to meet the most exacting industrial applications. Our lubricants, formulated from superior-grade base oils and additives, guarantee exceptional reliability, efficiency, and longevity.

### VZEN BIODIESEL OIL

VZEN Biodiesel Oil are made from a diverse mix of feed stocks including recycled cooking oil, soybean oil and animal fats. This non-petroleum-based product can be used as diesel fuel, textile lubricant and industrial heating oil fuel. VZEN Biodiesel Oil is environmentally friendly and biodegradable Oil.



### VZEN MINERAL TURPENTINE OIL

Vzen Mineral Turpentine Oil is a petroleum-derived solvent primarily used as a thinning agent and industrial cleaner. It is a clear liquid with a mild odor and high solvency power, making it effective in dissolving resins, oils, and grease.



### VZEN LIGHT DIESEL OIL

Vzen Light Diesel Oil, commonly known as LDO, is a blend of distillates and residual fuel oils. It is specifically designed for slow and medium-speed engines, boilers, and furnaces. LDO is known for its high calorific value and efficient combustion, making it a popular choice in various industrial applications.



### VZEN WHITE OIL

Vzen White Oil, also known as liquid paraffin, is a highly refined, clear, and odorless mineral oil. It is widely used in pharmaceuticals, cosmetics, and food industries due to its purity and safety. Additionally, it serves as a lubricant and insulating



fluid in industrial applications, offering excellent stability and performance.

## VZEN INDUSTRIAL FURNACE OIL/LSHS

Vzen Industrial Furnace Oil is a heavy petroleum product used primarily as fuel in industrial heating applications such as boilers, furnaces, and kilns. It is known for its high calorific value, cost-effectiveness, and efficient combustion properties.



## VZEN MULTIPURPOSE GREASE

Vzen MP Greases are premium quality lithium-based grease. These are environment friendly products, suitable for heavy-duty roller & plain bearings, and for situations warranting a use of extreme pressure grease, particularly to those subjected to shock loads at temperatures up to about 130°C.



[www.vzenindustries.com](http://www.vzenindustries.com)

## WESMAN THERMAL ENGINEERING PROCESSES PVT. LTD.

Wesman Thermal is the leading manufacturer of Combustion Equipment in India for last over 50 years. Wesman Thermal specialise in different type of burners for all types of Liquid & Gaseous fuels, Blowers, Gas / Oil trains & related projects. We provide complete turnkey solutions in the area of Combustion Engineering. We take care of Metal Re-heating, Metal / component Heat Treatment, Power Plants / Boilers, Mineral Processing, Food Processing, Chemical / Petro Chemicals, Hot Air Generators, Oil / Gas Skids, Waste Heat Recover / Incinerators and any other process that might be required according to the requirement.



### Our product range covers:

- Kiln Burners
- Pressure Jet Burners
- Oil / Gas Dual-Fuel Burners
- Self-Recuperative Burners
- Duct Burners
- Low Calorific Fuel Burners
- Hot Air / Gas Generators
- Oil Filtering and Pumping Systems
- Ignition and Flame Failure Systems
- Project Activity
- Burners for Indurating Furnaces
- Fans and Blowers
- Regenerative Burners
- Ribbon Burners
- Multi Fuel Burners
- Oil and Gas Skids
- Waste Heat Recovery Systems
- Ratio and Pressure Regulating Valves
- Burner Management Panels

### WESGEN REGENERATIVE BURNERS

Recover waste heat from furnace exhaust gases and preheat combustion air, to significantly increase efficiency over conventional burners or burners with recuperators. NOx emissions are extremely low, even when compared with cold air burners. WESGEN regenerators are heat and corrosion resistant and tolerate hostile environments that can destroy recuperators. WESGEN burners save significant amounts of fuel when applied to a variety of high temperature furnaces. The higher the process temperature, the higher the potential fuel saving when compare with conventional burners.



### WESMAN PELLET BURNERS

Iron ore pellets are used to feed blast furnaces or DRI plants to make steel. To make iron ore suitable for the above applications, Iron ore is processed into pellets and then fired in an indurating / travel grate furnace.



Wesman's Pellet Burner series are installed on both sides of a travel grate /

straight grate-indurating furnace to produce the required heat taking into consideration the heat produced within the furnace from the heated pellets. Our Pellet Burners for Indurating furnace come in different sizes. Capacity ranging from 1 to 5 Mkal/hr.

#### MULTI-FUEL BURNER SERIES TAV25 - TAV25 MULTI-FUEL BURNERS

TAV25 Multi-Fuel burners can be used in heat treatment, forging, re-heating non-ferrous melting furnaces, kilns, ovens, air heaters, dryers, chemical process equipment, and other applications where superior temperature uniformity is required.

##### Fuel Options:

- One oil and two gases (furnace oil, light diesel oil, HSD or kerosene along with natural gas, LPG, propane, CBM, coke oven gas, blast furnace gas, or producer gas)
- Three gases such as high GCF (natural Gas, LPG, propane), medium GCF (CBM, coke oven gas) and low GCF (blast furnace gas, producer gas)
- Can use any one or all three fuels simultaneously.



#### SELF RECUPERATIVE DUAL FUEL BURNERS

Self Recuperative Dual Fuel Burners are equipped with an integrated heat exchanger to preheat combustion air by thermal utilisation of the flue gases. Depending on the application, energy savings of 30% or more are achievable. Self Recuperative Burners are applicable for Single Ended Radiant Tubes (SER) as well as for open fired industrial furnaces. The RECUPERATIVE BURNER BASIC which is equipped with a Tube Type Recuperator will achieve pay back within a short period of time. The SELF RECUPERATIVE ADVANCED with a cased Fin Type Recuperator is highly efficient and will further shorten the pay back period.



#### GAS BURNERS WGBC/WGBS

##### Description

- Gas Burner for heating industrial furnaces and process engineering facilities.
- Power range 15-5000kW
- Wide control range
- Direct electric ignition
- Flame detection with ionizations rod, UV-probe possible
- WGBC version with ceramic flame tube
- WGBC version for burner tile or metallic flame tube
- Various flame exit velocities and flame shapes are possible



#### FireStorm DUAL FUEL BURNERS SERIES 6514

6514 FireStorm DUAL FUEL BURNERS are suitable for light as well as heavy oil and all types of gases. It has sealed in CI mounting having provision for UV head, Pilot burner flame observation parts. These are used for Low as well as high temperature application where long flame is desirable. For fuel saving, preheated combustion air upto 3500C can be used. In case of using hot combustion air, consult WESMAN for burner selection.



[www.wesman.com](http://www.wesman.com)

#### ■ XYLEM WATER SOLUTIONS INDIA PVT. LTD.

Xylem is a leading global water solutions company dedicated to advancing sustainable impact and empowering the people who make water work every day. Xylem connects diverse capabilities and innovative technologies to provide tailored solutions across the entire water cycle. From moving, treating and measuring water to optimizing and maintaining water systems, Xylem collaborates with customers to solve their



most critical challenges. Our 23,000 diverse employees delivered revenue of \$8.6 billion in 2024, we are creating a more sustainable world by enabling our customers to optimize water and resource management and helping communities in more than 150 countries become water-secure. Join us at [www.xylem.com](http://www.xylem.com) and Let's Solve Water.

Xylem is the world leader in manufacturing tough, portable and reliable pumps. Xylem have more than 100 years of heritage behind Godwin and Flygt Brand. Xylem dewatering pumps have wide application to remove water sludge and slurries from construction, mining, municipal, steel, power and other mineral industries.

Xylem Godwin Automatic Self Priming Surface Pumps CD Series are suitable for dry running, motor or diesel engine mounting are available in both skid and trolley. These pumps can handle solids upto 18% / 75 mm in diameter, Flow: 3500 m3/hr, Head: 75m, 7.5 – 425 KW

Xylem Godwin HL series pumps are designed for low flow and high head. These surface pumps can handle solids upto 18% / 75 mm in diameter, Flow: 1000 m3/hr, Head: 180 m, Upto 560 KW

Xylem Godwin BD series pumps are affordable, high-performance solution, designed and built specifically for Emerging Markets. These pumps can handle high volume, medium-head, large solids-handling capabilities, Flow: up to 595 m3/hr, Head: Up to 50 m, available with either Compressor/Venturi or Vacuum pump priming systems, Interchangeable application specific impellers, 316 stainless steel pump-end internals for high and low pH applications, Site trolley or skid mount, both incorporating integral overnight running fuel tanks

Xylem Flygt 5000 series Submersible pumps can easily handle mechanically abrasive or fluids laden with particles. It can handle solids up to 65% / 75 mm in diameter, Flow: 1000 m3/hr, Head: 85 m, Up to 3.7 to 215 KW

Xylem Flygt 2000 series submersible slurry pumps are rugged reliable and cost effective, handle transportation of the most abrasive solids that are suspended in liquid. Handle solids upto 18% / 10 mm in diameter, Flow: 900 m3/hr, Head: 180 m, Upto 1.2 to 90 KW

Xylem offers a comprehensive range of products and systems for water and wastewater treatment. Our solutions include smarter aeration, advanced filtration, and disinfection systems. We provide Advanced SBR, STP retrofit, automatic screen filters, diffusers, mixers, chlorination systems, UV, and ozone systems for municipal and industrial applications. Designed to meet water sustainability goals and environmental norms, our products have successfully implemented more than 50 large STPs in India. Xylem's experts assess customer needs to deliver tailored solutions for effective water management.

Xylem's Measurement and Control Solutions (MCS) provides intelligent solutions that enhance operational efficiency through advanced sensing, communications, and data management technologies. Xylem serve water, gas, and electric utilities and industrial customers, offering cutting-edge smart metering, quantitative and qualitative measurement capabilities, and data management solutions



[www.xylem.com/india](http://www.xylem.com/india)

## YAHA WATER SYSTEMS PVT. LTD.

We are Yaha Water Systems Pvt Ltd and we know the worth of Water! We are an energetic team with an average experience of over 25 years in Conceptualizing, Designing, integrating and delivering, sustainable, customer centric water engineering solutions.

Company is headquartered in Mumbai & manufacturing plant at Khopoli, Maharashtra. Our plant is fully equipped with in house Manufacturing, Quality, Engineering & assembly to deliver material as per our customers projects requirements.

Yaha Water has developed a range of compact automatic products – Lamella Settlers, online self-cleaning filters, Zen active media filters ..... incorporating innovative technology characterized by low.

Operating cost and short capital payback. With these products Yaha Water has been effective in providing solutions to a wide range of water supply and treatment applications in Industrial, Municipal & Irrigation Applications.

### Yaha Provide Solutions for...

- Filtration of intake & re-circulated water
- Process Water Filtration
- Cooling water: Side Stream & Full Stream Filtration
- Pre-Filtration to Membranes
- Filtration for Drinking Water.
- Reuse of treated sewage water, effluent water.
- Special Applications – Gland Seal Cooling, Generator Cooling

### Few of ours esteemed Customers.

- L&T Constructions
- Karnataka Water Sewerage & Drainage Board (KUWSDB)
- Chennai Metro Water Supply & Sewerage Board (CMWSSB)
- BARC
- BHEL
- Tata Steel
- Tata Projects Ltd.
- Thermax
- Vatech Wabag
- JSW
- JSPL
- Sunflag
- SAIL

### OUR MANUFACTURING FACILITY

Yaha Water Systems has a state-of-the-art manufacturing facility at Khopoli, on the outskirts of Mumbai. We procure material from reputed companies and employ manufacturing systems that comply with global regulations and standards. Our quality assurance team employs very high standards of quality checks, assuring our customers of supply of products of high performance and reliability.



### YAHA TRITON SERIES - BRUSH TYPE

YAHA TRITON series of online self cleaning filters are electrically driven automatically self-cleaning filter with brush cleaning backwash mechanism. The function of the filter is controlled by a flushing controller.

The filter unit is equipped with a brush cleaning mechanism which essentially comprises of Stainless Steel (SS) 316 brushes mounted on a SS 316 frame which is in turn connected to a motor gearbox mechanism through a shaft. A diaphragm valve/hydraulically actuated valve/motorized valve is used as a flushing valve which is in open condition during backwash.

The system is monitored in real time by a DP switch which send real time pressure difference signal to PLC control panel regarding pressure drop between inlet & outlet of system. When a preset DP is achieved the control panel activates the motor thus rotating the brush mounted frame and opening the flushing valve. Due to the scrapping action of the brushes the filter cake that has formed on the filter screen to be brushed off, and complete dirt is removed without interrupting filtration.

The cleaning process can be activated both automatically and manually. The short cleaning time of 20-25 seconds, using a minimum of flushing water, is sufficient to clean the entire filter element, with the filtering process being maintained.



### YAHA TRITON SERIES - SLN TYPE

YAHA TRITON series of online self cleaning filters are electrically driven automatically self-cleaning filter with special nozzle suction cleaning backwash mechanism. The function of the filter is controlled by a flushing controller.

Cleaning of the filter is carried out by the suction special nozzles which scans and spirals across the screen, the open drain valves creates a high velocity suction stream at the nozzle tip which "vacuums" the filter cake from the screen. During the self-cleaning process, which takes approximately 30 seconds, filtered water continues to flow downstream.

Operation and cleaning cycle is controlled and monitored by a PLC. The system is monitored in real time by a DP switch which send real time pressure difference signal to PLC control panel regarding pressure drop between inlet & outlet of system. When a preset DP is achieved the control panel activates the motor thus rotating the suction scanner nozzles and opening the flushing valve. Due to the suction action of the nozzles the filter cake that has formed on the filter screen is removed without interrupting filtration.

The cleaning process can be activated both automatically and manually. The short cleaning time of 20-25 seconds, using a minimum of flushing water, is sufficient to clean the entire filter element, with the filtering process being maintained.



[www.yahawater.in](http://www.yahawater.in)

## ZKL BEARINGS [INDIA] PVT. LTD.

We are sure that neither the Brand ZKL nor the name of our Company ZKL Bearings (India) Pvt. Ltd. requires any fresh introduction to you. Nonetheless, there are certain features of our company and certain benefits that you can get through an intimate business relationship with us, that need to be brought to your kind attention.



As you are no doubt aware, ZKL Bearings (India) Pvt. Ltd is a part of a conglomerate of companies, involved with the distribution of bearings - probably the largest of its kind in India. The group was started way back in 1975 and today handles multiple premium brands of bearings.

ZKL Bearings (India) Pvt. Ltd was incorporated almost two decades back as the Principal Agents of the ZKL Group of Czech Republic, in India, Today, we are the Master Distributor of the ZKL brand of Bearings and Bearing Accessories for the territory of the Republic of India.

Besides the Corporate Head Office in Kolkata, and branches in Mumbai, Chennai, and Gurgaon, we have a number of regional engineers located in prominent industrial centres. Over and above that, we have an extensive Authorized Dealer network all over India.

Our modern warehouse, situated very close to the city of Kolkata, is equipped with state of the Art facilities and carries a very large inventory of most of the products from the ZKL range, so as to support our customers in maintaining the Machine /Equipment reliability round the clock.

We will be happy to serve you for all your bearings & bearing accessories requirements.

- Excellent combined load property. This bearing accommodate very heavy axial load together with considerable radial load. In fact this is the only roller thrust bearing which can carry both Axial & Radial Load.
- Spherical Roller Thrust Bearing is the only self-aligning thrust bearing and is the strongest amongst all thrust roller bearing.
- It has a wide speed range from very slow to





moderately high.

- When used in pairs, these bearing offers very high axial and as well as moment stiffness.
- The separable design facilitate easy mounting and dismounting



[www.zklindia.com](http://www.zklindia.com)

## ■ ZNL BEARINGS PVT. LTD.

ZNL Bearings Pvt. Ltd. as a leading manufacturer of Ball bearings & Roller bearings in India since 1996. Our Manufacturing plant is situated at Changodar GIDC, Sanand, Ahmedabad (Gujarat - India). ZNL Bearings Pvt Ltd is committed towards bringing a Friction Free Revolution & offering over 1500 nos different sizes of Ball & Roller Bearings.



We are successfully supplying in Domestic as well as Global market since many years to the "OEM segments" like Power Transmission, Crane & Hoist, Material Handling & earth moving equipment, Construction & mining equipment, Farm Machinery, Rolling mill, Electric motors, Textile, Steel, Paper & Cement Plant machinery etc. We are also supplying in "Government segments" like Indian Railways, India Defense Segment (Engine & power transmission), Earth moving etc.

### # Key Benefits of workings with ZNL Bearings:

- Reverse Engineering of sample to bulk manufacturing to meet your special requirements.
- Certification & Awards: IATF 16949:2016 & ISO 9001:2015, 14001:2015, 45001:2018 certified quality standards, Star export house award for 3 consecutive years.
- Bulk Manufacturing: Production capacity of more than 25,00,000 bearings per year.
- Ultramodern Manufacturing Plant scattered on 11500 sq.mtrs.
- Company-wide SAP System: To track information from inquiry to delivery and post sales services stages, to ensure our clients for quick & reliable response.

- Large product range & inventories: To ensure availability in shortest possible time.
- Manufactured & tested at company's own production facility.
- Cost Effective: Quality Products at a competitive price with excellent service.
- Stability: Sustained Sales growth since last 16 years and well planned financial resources.
- Worldwide Presence: Distribution channel in more than 30 countries (Exports contribute more than 60% of Turnover).

### SPHERICAL ROLLER BEARINGS

Range – 22205 to 22272, 22308 to 22380, 23024 to 230/500, 23120 to 231/500, 23936 to 239/500, 24024 to 240/500, 24124 to 241/500

Min ID: 25mm to Max ID: 500mmS

Cage variant – Brass Cage, Steel Cage

### TAPERED ROLLER BEARINGS

Range – 30202 to 30260, 30302 to 30360, 31303 to 31330, 32004 to 32064, 32204 to 32260, 32305 to 32324, 33009 to 33024, 33205 to 33220, 32908 to 32972

Min ID: 15mm to Max ID: 360mm

Cage Variant – Steel Cage

### CYLINDRICAL ROLLER BEARINGS

Range – N, NU, NJ, NUP 204 to 248, 304 to 348, 405 to 420, 2205 to 2244, NU1008 to NU1060, NU5206 to NU5260, NCF3004 to NCF3015, SL045005PP to SL045096PP, SL181840 to SL185096

Min ID: 20mm to Max ID: 240mm

Cage Variant – Brass Cage, Steel Cage

### DEEP GROOVE BALL BEARINGS

Range – 6000 to 6060, 6200 to 6240, 6300 to 6334, 6403 to 6420, 16004 to 16052, 61800 to 61880, 61900 to 61996

Min ID: 10mm to Max ID: 480mm

Cage Variant – Steel Cage

Available in plain, ZZ & 2RS type

### ANGULAR CONTACT BALL BEARINGS

Range – 7200B to 7248B, 7302B to 7338B, 7404B to 7420B, 3200 to 3222, 3302 to 3322

Min ID: 10mm to Max ID: 240mm

Cage Variant – Steel Cage

### SELF ALIGNING BALL BEARINGS

Range – 1204 to 1230, 1304 to 1322, 1405 to 1418, 2204 to 2222, 2305 to 2320, 11204 to 11212

Min ID: 20mm to Max ID: 150mm

Cage Variant – Steel, Brass and Polyamide Cage

### THRUST BALL BEARINGS

Range – 51100 to 51160, 51200 to 51260, 51305 to 51340, 51405 to 51430, 52202 to 52240, 53205U to 53240U, 53405U to 53430U

Min ID: 10mm to Max ID: 300mm

Cage Variant – Steel & Brass Cage

### PILLOW BLOCK BEARINGS

Range – UC, UCP, UCF, UCT, UCFC, UCFL, 204 to 220, UC, UCP, UCF, UCT, 304 to 328

Available in inch and mm



[www.znlbearings.com](http://www.znlbearings.com)

## Post Show Report

The “ISME - International Steel and Metallurgy Exhibition” (concurrent with International Conference on Steel), organised by TAFCON, during November 6-9, 2023, was a grand success, as informed by VVIPs, Delegates, Exhibitors and Visitors.

“ISME 2023” was organised concurrent to the most prestigious 10th edition of “IME 2023 – the Premier International Exhibition for Mining, Equipment & Minerals” also organised by TAFCON. The synergy of these exhibitions were accepted and hailed by the Industry.

The events were inaugurated by “Chief Guest” Shri Amrit Lal Meena, IAS, Secretary, Ministry of Coal, Government of India in the presence of ‘Guest of Honour’ Ms. Rowan Ainsworth, Consul General, Australian Consulate General, Kolkata; the other eminent dignitaries present on the occasion were President MGMI Dr. B. Veera Reddy, Director (Technical) Coal India Ltd., Shri P.M. Prasad, CMD, Coal India Ltd., Shri Bhola Singh, CMD, Northern Coalfields Ltd., Shri Prasanna Kumar Motupalli, CMD, NLC India Limited, Shri Rajesh Nath, MD, VDMA.

ISME, proved to be an ideal platform for the global steel and metallurgy players, decision makers, bureaucrats, investors, industry leaders and other key stakeholders of the industry to congregate, display products, exchange technologies, new initiatives, negotiate for mutual business development and forge meaningful partnerships.

A conference, the theme “Minimising Carbon footprint in the Steel Industry was organized in association with Grant Thornton was very well attended. The Sessions, including a session on CEO’s panel deliberation, had laid a strategic roadmap for paving the way for a greener, more sustainable future for the steel making sector; emerging technologies, sustainable practices, innovative approaches and importance of policies promoting trade, investment, skill development and job creation ensuring the steel industry’s resilience and growth.

High level Trade Delegations and Country Level Group Participation from Germany, Australia, Czech Republic, Poland and many other countries were a part of these important events. The Exhibitions were participated by more than 446 exhibitors from Steel, Mining, Metallurgy and other allied sectors for displaying their equipment, products, technologies, innovative applications and research & development along with large participation from mineral rich states of India such as Gujarat, Jharkhand, West Bengal, etc.

ISME 2023 and the 10th IME 2023, were an unprecedented success as also by the remarks and comments given by VIPs, Delegates, Exhibitors and Visitors et al.

### Aerial View of Last Edition



## Facts & Figures of Last Edition

**446**

Exhibitors

**25,430**

Footfalls

**20**

Countries

**600**

Delegates

**60**

Technical Papers

**42,000 sqm.**

Exhibition Area

Germany - Partner Country

Australia - Focus Country

Gujarat - Partner State

Jharkhand - Focus State



## Few Glimpses of Last Edition





## Participants of Last Edition - (ISME + IME 2023)

- ACS International India Pvt. Ltd.
- Aditya Technologies
- Advantech India
- Aereo
- African Mining Market
- AG Conveyor Parts Pvt. Ltd.
- Aggcon Equipments International Pvt. Ltd.
- AjnaLens by Dimension NXG Pvt. Ltd.
- AL-Ameen Enterprises
- All India Association of Industries
- Allied Mining Company
- Alpha Trading Co.
- AMC Services & Engineers Pvt. Ltd.
- Andritz Separation and Pump Technologies India Pvt. Ltd.
- Applied Engineering Services
- Aqua Machineries Pvt. Ltd.
- Aquatech Pumping Solutions
- Arcadis IBI Group
- ARICO Instruments
- Arm & Hammer Forgings Pvt. Ltd.
- Arul Polymers Pvt. Ltd.
- Austmine Ltd.
- Australian Consulate General Kolkata
- Australian Trade and Investment Commission
- Automation Controls
- Balkrishna Industries Ltd.
- Bardia Trading Company
- Baumer India Pvt. Ltd.
- Bearing Business Co.
- Beckhoff Automation Pvt. Ltd.
- Beijing Screen Technology Co., Ltd.
- BEML Ltd.
- Beumer India Pvt. Ltd.
- Bharat Coking Coal Ltd.
- Bradken
- Bray Controls India Pvt. Ltd.
- Brother International India Pvt. Ltd.
- Bruhat Logistics Pvt. Ltd.
- Building & Construction Update (Buildcon Media)
- Carborundum Universal Ltd.
- Caterpillar India Engineering Solutions Pvt. Ltd.
- CBS Technologies Pvt. Ltd.
- CDT-Czech Extraction and Mining Technology Association
- Cenlub Industries Ltd.
- Central Coalfields Ltd.
- Central Institute of Mining and Fuel Research
- Central Mine Planning & Design Institute Ltd.
- Cflo
- Chanderpur Works Pvt. Ltd.
- Chhajed Steel & Alloys Pvt. Ltd.
- CIA World (Epic Media Pvt. Ltd.)
- Coal Consumers' Association of India
- Coal Gasifiers Association of India
- Coal India Ltd.
- Coal Producers Association
- CoalShastra
- Cognecto Pvt. Ltd.
- Compensus Sp. z o.o.
- Complete Instrumentation Solutions Pvt. Ltd.
- Consol Geo Technologies Pvt. Ltd.
- Construction Mirror
- Construction Times / Equipment Times
- Continental Conveyors Pvt. Ltd.
- Control Systems & Solutions
- Convero Solutions
- Coresonant Systems Pvt. Ltd.
- Cosmo World
- CRC India Manufacturing and Distributors Pvt. Ltd.
- CT Today (Karan Communications)
- CTC Impex India Pvt. Ltd.
- CUSMAT Technologies Pvt. Ltd.
- Dandong Dongfang Measurement & Control Tech. Co., Ltd.
- Daniels GT India Pvt. Ltd.
- Darling Pumps Pvt. Ltd.
- DCS Techno Services Pvt. Ltd.
- Decora Auto Forge Pvt. Ltd.
- Deepak Fertilisers and Petrochemicals Corporation Ltd.
- Department of Mines and Geology, Govt. of Jharkhand
- Derrick Solutions India Pvt. Ltd.
- Deswik
- DFME "Damel" S.A.
- Digital Weighing Systems Pvt. Ltd.
- Dinamic Oil India Pvt. Ltd.
- DMT Consulting Pvt. Ltd.
- Donaldson India Filter Systems Pvt. Ltd.
- Dulevo India Pvt. Ltd.
- Dy Mark (Aust.) Pty. Ltd.
- Earthmoving Unlimited
- Earthmoving UnLtd.
- Eastern Coalfields Ltd.
- Eastern Weldmesh Pvt. Ltd.
- Eastman Crusher Company Pvt. Ltd.
- Electro Zavod (India) Pvt. Ltd.
- Electropneumatics and Hydraulics (I) Pvt. Ltd.
- Elektromag - Joest Vibration Pvt. Ltd.
- Elektromag Devices Pvt. Ltd.
- Elgin Separation Solutions / Terrasource Global
- Emesent Pty. Ltd.
- EMG Automation India Pvt. Ltd.
- Endurance Wear Solutions LLP
- Enelex spol. s.r.o.
- Entvent Tools & Services
- EPC World Media Pvt. Ltd.
- EPLAN Software & Services Pvt. Ltd.
- Eureka Conveyor Beltings Pvt. Ltd.
- Exploration Drill Rigs Pty. Ltd.
- Fakoor Meghnatis Spadana Co.
- Falcon Screens
- Ferrit s.r.o.
- First Mining DRC-Zambia
- Fracwell Miners Pvt. Ltd.
- Galaxy Chains Pvt. Ltd.
- Geological Survey of India
- Geonet Envirosolutions Pvt. Ltd.
- Geovale Services Pvt. Ltd.
- Gilbarco Veeder - Root
- Golden Precision Products Pvt. Ltd.
- Goodwin Pumps India Pvt. Ltd.

## Participants of Last Edition - (ISME + IME 2023)

- Gorny Instrument Ltd.
- Group R Mining and Exploration India Pvt. Ltd.
- Groz Net Industries
- Gujarat Mineral Development Corporation Ltd.
- H Global Resources
- Hamtek Technologies India Pvt. Ltd.
- Hansen Electric, spol. s r.o.
- Haver & Boecker Latinoamericana Maquinas LTDA.
- HAWE Hydraulics Pvt. Ltd.
- Hazemag Allmineral India Pvt. Ltd.
- Hella Infratech Pvt. Ltd.
- Hewittrobins International Pvt. Ltd.
- Hindustan Petroleum Corporation Ltd.
- Hydro Pneumatic Accessories
- Imagegrafix Software Solutions Pvt. Ltd.
- IMCO Alloys Pvt. Ltd.
- INCO engineering s.r.o.
- Indian Oil Corporation Ltd.
- Indian Rubber Manufacturers Research Association
- Indiana Conveyors Pvt. Ltd.
- Indicon Westfalia Ltd.
- Indotray - H P Polymers Pvt. Ltd.
- Innovative Infra & Mining Solutions Ltd.
- Insmart Systems
- InstaDigin
- Intech Safety Pvt. Ltd.
- Intermodal Solutions Group
- International Combustion India Ltd.
- Inventgrid India Pvt. Ltd.
- Investment NSW
- ION Exchange India Ltd.
- Iron & Steel Review
- Isgec Heavy Engineering Ltd.
- IWENT sp. z o. o.
- Jacon Equipment
- Jami Hydraulics Pvt. Ltd.
- Jayashree Electrodevices Pvt. Ltd.
- Jayashree Electron Pvt. Ltd.
- Jennmar Australia Pty. Ltd.
- Jindal Steel & Power Ltd.
- JK Tyre & Industries Ltd.
- JM Frictech India Pvt. Ltd.
- JMS Mining Pvt. Ltd.
- John Finlay India Pvt. Ltd.
- Jonas Woodhead and Sons (I) Ltd.
- Joy Global (India) Pvt. Ltd.
- JSW Steel Ltd.
- Kadtech Geoinfra Pvt. Ltd.
- Kamlesh Metal & Alloy
- Karcher Cleaning Systems Pvt. Ltd.
- Kateel Engineering Industry Pvt. Ltd.
- Khodiyar Industrial Pvt. Ltd.
- Khosla Profil Pvt. Ltd.
- Kleenoil Filtration India Pvt. Ltd.
- Klinge Holdings Pty. Ltd.
- KLR Industries Ltd.
- KSB Ltd.
- KSN Ventures
- Kwik Patch Pvt. Ltd.
- L & M Radiator Pty. Ltd.
- Lalbaba Seamless Tubes Pvt. Ltd.
- LaserBond Ltd.
- LCS Controls Pvt. Ltd.
- Lebracs Rubber Linings Pvt. Ltd.
- Leotronic Scales Pvt. Ltd.
- Liebherr India Pvt. Ltd.
- Logica Engineering and Manufacturing India Pvt. Ltd.
- M. A. Zavery
- Maco Corporation India Pvt. Ltd.
- Magna Tyres India Pvt. Ltd.
- Maha Hydraulics Pvt. Ltd.
- Mahanadi Coalfields Ltd.
- Maheshwari Mining Pvt. Ltd.
- Manav Engineering
- Marine Electricals (India) Ltd.
- Martin Engineering Company India Pvt. Ltd.
- Masyc Projects Pvt. Ltd.
- MBH Pumps Gujarat Pvt. Ltd.
- McNally Sayaji Engineering Ltd.
- Measuredi Technologies Pvt. Ltd.
- Meatech Solutions LLP
- Mecon Ltd.
- Merit BMH Engineering Pvt. Ltd.
- MetalKarma Engineering Technologies Pvt. Ltd.
- Millennium Products and Services
- MineARC Systems
- Mineexcellence Pty. Ltd.
- Minelab India Pvt. Ltd.
- MINEMATICS Solutions Pvt. Ltd.
- Mineral Technologies
- Minimac Systems Pvt. Ltd.
- Mining India
- Mining Skills Australia
- Ministry of Industry and Trade, Czech Republic
- Minocular (BlueBanyan Technologies Pvt. Ltd.)
- MOIL LTD.
- Monotech Systems Ltd.
- Mtandt Rentals Ltd.
- Multiskilled Resources Australia Pty. Ltd.
- My Value Pack Retail Pvt. Ltd.
- Myport Services India Pvt. Ltd.
- Nanda Millar Co.
- National Engineering Industries Ltd.  
(NBC Bearings - CK Birla Group)
- Nautitech
- Netzsch Pumps & Systems India
- Newton Weighing System Pvt. Ltd.
- NLC India Ltd.
- NMDC Ltd.
- NMTG Mechtrans Techniques Pvt. Ltd.
- Northern Coalfields Ltd.
- NTPC Ltd. (Coal Mining Hq, Ranchi)
- Oilmax Systems Pvt. Ltd.
- Oli Vibrators India Pvt. Ltd.
- Orbinox India Pvt. Ltd.
- Ore & Metals
- Oriental Engineering Works Pvt. Ltd.
- Orione Hydraulics Pvt. Ltd.

## Participants of Last Edition - (ISME + IME 2023)

- P&G Geohazard Solutions Pvt. Ltd.
- Parcomm Hydraulics Pvt. Ltd.
- Patentus S. A.
- Perfect Engineering Components Pvt. Ltd.
- Plant & Equipment
- PPK Mining Equipment Pty. Ltd.
- Prabhu Industrial Udyog Pvt. Ltd.
- Pradeep Metals Ltd.
- PRD Rigs India Pvt. Ltd.
- Precision Bearings Pvt. Ltd.
- Premium Transmission Pvt. Ltd.
- Prestige Cable Industries
- Prime Precisions
- Primus Sam Pvt. Ltd.
- Projects Mirror
- Prok Conveyor Equipment Pvt. Ltd.
- Propylon Products
- Raghu Diamonds
- Ravasco Transmission and Packing Pvt. Ltd.
- Reactore India Pvt. Ltd.
- Regal Rexnord
- Repos Energy India Pvt. Ltd.
- Resurgent India Ltd.
- Řetězárna a.s.
- Revathi Equipment Ltd.
- RIMCO
- Ringfeder Power Transmission India Pvt. Ltd.
- Ringspann Power Transmission India Pvt. Ltd.
- Rocscience Inc.
- Royal Elastomers Pvt. Ltd.
- Royaleo Futuristics
- Rulmeca India Pvt. Ltd.
- RUP Enterprises
- Sachin Industries Ltd.
- Safelift Industries
- Safety Wise Solutions Pty Ltd
- Saharsh Enterprises
- Saideep Vibrators Pvt. Ltd.
- Sakar Rub-Tech Pvt. Ltd.
- Saksham Casting
- Sany Heavy Industry India Pvt. Ltd.
- SCH Hydraulics Pvt. Ltd.
- Scoda Tubes Ltd.
- SCT Operations Pty Ltd
- Selfservit Solutions Pvt. Ltd.
- Shree Guhan Engineering Projects Pvt. Ltd.
- Shree Sahajanands Automeck Pvt. Ltd.
- Shri Ram Machinery
- Siemens Ltd.
- SIMCO Mining Products & Services Pty. Ltd.
- Skylark Drones Pvt. Ltd.
- SLon Magnetic Separator Co., Ltd.
- SNWEL Engineering Pvt. Ltd.
- South Eastern Coalfields Ltd.
- Southern Electronics (Bangalore) Pvt. Ltd.
- Squadrone Infra Mining Pvt. Ltd.
- SRB International Pvt. Ltd.
- SSPB Ltd.
- Starrag India Pvt. Ltd.
- STM Construction Equipment (India) Pvt. Ltd.
- Studwise
- Sundaram Industries Pvt. Ltd.
- Suretech Infrastructure Pvt. Ltd.
- Swan Environmental Pvt. Ltd.
- TAKRAF India Pvt. Ltd.
- Tata Hitachi Construction Machinery Co. Pvt. Ltd.
- Tata Steel Industrial Consulting
- TechFab India Industries Ltd.
- Techflow Enterprises Pvt. Ltd.
- Techno Impressions Pvt. Ltd.
- Technovision Design & System Pvt. Ltd.
- Terre Arme India (Reinforced Earth India Pvt. Ltd.)
- TEXMiN, IIT (ISM) Dhanbad
- TH COMPANY
- The Bisra Stone Lime Company Ltd.
- The West Bengal Power Development Corporation Ltd.
- Thejo Engineering Ltd.
- Thermo Fisher Scientific India Pvt. Ltd.
- Thyssenkrupp Industries India Pvt. Ltd.
- Tide Water Oil Co. (India) Ltd.
- Top Gear Transmissions
- Trade and Investment Queensland (TIQ) Govt. of Queensland, Australia
- Trakblaze Pty. Ltd.
- Transmin
- Tribotech
- Tritorc Equipments Pvt. Ltd.
- UEDA India Pvt. Ltd.
- Unitech Project
- Universal Electricals and Electronics
- Universal MEP Projects & Engineering Services Ltd.
- V M Salgaocar and Brother Pvt. Ltd.
- Vasthi Instruments Pvt. Ltd.
- Vats Filtration Technologies Pvt. Ltd.
- VDMA India Services Pvt. Ltd.
- Vee Technologies Pvt. Ltd.
- Vev Ventures
- Vinni Chemicals Pvt. Ltd.
- Voith Turbo Pvt. Ltd.
- VP Synergic Weld Solutions Pvt. Ltd.
- V-Tork Controls
- WA School of Mines - Curtin University
- Waidhan Engineering & Industries Pvt. Ltd.
- Wearresist Technologies Pvt. Ltd.
- Weightrack India Pvt. Ltd.
- Weldman Synergic Pvt. Ltd.
- West Bengal Mineral Development & Trading Corp. Ltd.
- Western Australia Government Department of Jobs, Tourism, Science and Innovation
- Western Coalfields Ltd.
- World Coal
- Yatis Telematics
- YCUBE Engineered Solutions Pvt. Ltd.
- ZAM - SERVIS s.r.o.
- Zen Meerkat Pty. Ltd.
- Zenith Industrial Rubber Products Pvt. Ltd.
- 99 Business Media Group



# CALENDAR OF EVENTS

11<sup>th</sup>  
Edition



## IME 2025

International Mining, Equipment & Minerals Exhibition

**Oct. 30<sup>th</sup> - Nov. 2<sup>nd</sup>, 2025 | Kolkata, India**

Science City Ground & Biswa Bangla Mela Prangan

ORGANISED BY



[www.miningexpoindia.com](http://www.miningexpoindia.com)

ORGANISED BY



## ISME

A Part of IME 2025

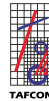
2nd International Metal Exhibition

**Oct. 30<sup>th</sup> - Nov. 2<sup>nd</sup>, 2025**

Science City Ground & Biswa Bangla Mela Prangan  
Kolkata, India

[www.steelandmetallurgyexpo.com](http://www.steelandmetallurgyexpo.com)

ORGANISED BY



India Construction & Machinery Exhibition

**Tue. 24<sup>th</sup> - Thu. 26<sup>th</sup> February 2026**

Biswa Bangla Exhibition Centre  
Rajarhat, Kolkata, India

[www.constructionindiaexpo.com](http://www.constructionindiaexpo.com)

ORGANISED BY



In Association with



AEROSPACE & DEFENCE EXPO

**Thu. 10<sup>th</sup> - Sat. 12<sup>th</sup> September 2026**

Yashobhoomi, IICC, Dwarka, New Delhi, India

[www.aedexindia.com](http://www.aedexindia.com)

ORGANISED BY



In Association with



**Thu. 10<sup>th</sup> - Sat. 12<sup>th</sup> September 2026**

Yashobhoomi, IICC, Dwarka, New Delhi, India

[www.airportindiaexpo.com](http://www.airportindiaexpo.com)

6th Edition

16th Edition

## MET & HTS

Material Engineering, Equipment, Technology Exhibition  
and Heat Treatment Show

**December 2026 | Bombay Exhibition Centre, Mumbai, India**

Focus Sectors: • Defence • Railways • Energy • Heat Treatment • Medical

[www.metindiaexpo.com](http://www.metindiaexpo.com)

ORGANISED BY



[www.htsindiaexpo.com](http://www.htsindiaexpo.com)



For Stall Booking & Enquiries, Contact:

**TAFCON Projects (India) Pvt. Ltd.**

Tel: +91-11-49857777

Email: [events@tafcon.in](mailto:events@tafcon.in)

Web: [www.tafcon.in](http://www.tafcon.in)

Coming from our CORE STRENGTH, TAFCON stepped into a new era of trade promotion catalyzing economic growth and gained the centre stage as ONE STOP SOLUTION PROVIDER for Trade Fairs.

Serving Exhibition Industry from Over 35+ Years

## Participating Options

### Built-Up Stall (in Air Conditioned Halls)

Includes: Octonorm Wall Panels, Synthetic Carpet, Fascia in English, 1 Spotlight per 3 sqm., One 5 amp socket per 12 sqm., 1 Counter, 3 Chairs, 1 Glass Top Round Table, Basic Single Phase Electricity for stand lighting and basic daily usages.

### Bare Space (in Air Conditioned Halls)

Electricity Load to be ordered and paid extra

### Sponsorship Packages (including Stall)

Please refer to Sponsorship Brochure for the same

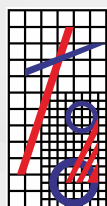


**SCAN QR CODE  
TO ENQUIRE FOR EXHIBITING**

## Kolkata - The City of Joy

Kolkata "The City of Joy" is the capital of the Indian State of West Bengal. It is also the commercial capital of East India, located on the east bank of the Hooghly River. The 'City of Joy' earned its nickname because of its unfettered enthusiasm for its culture, traditions, literature, history, food and more. The city has something for everyone from art and literature, to sports, food, shopping, history, architecture, religion, spiritualism and even politics. Kolkata is the perfect amalgamation of old-world charm and modern Experience. Every nook and corner of this city is filled with stories that are bound to mesmerise and charm you. There is more to Kolkata than one can ever imagine. The entire city of Kolkata is covered with the various means of transport, which simply means that you will not face any issues in commuting in this city.

## About Organisers



### Tafcon Projects India Pvt. Ltd. (TAFCON)

TAFCON is a professionally managed company with over six decades of experience and expertise in organising International Trade Fairs and Conferences in India and overseas, on various subjects namely Mining; Minerals; Metals; Materials; Defence; Heat Treatment; Foundry; Manufacturing; Surface Engineering, Paints & Coating; Packaging; Printing; Environment; Paper; Beauty; Lifestyle; Tot Teen & Mom; Education; Medical & Healthcare; Poultry, Dairy & Food Technology; Travel & Tourism; etc.



### Mining, Geological & Metallurgical Institute of India (MGMI)

MGMI, the oldest institute of its kind in Asia has been promoting the cause of the mineral industry since its inception on 16 January 1906. It has been on the forefront of professional societies in mining and geosciences around the world. MGMI has always provided a forum for sharing experiences and learning of the latest in best practices and technology. The Institute presently has more 3,000 members serving the mining, minerals and metallurgical industry and diversified its valued added activities in various fields. The institute is having its headquarter and one of its branch in Kolkata and 18 more branches throughout the country.

### Media Support



### Follow us :



ISME\_Expo



@ISME\_Expo



ISME\_Expo

### For Exhibition & Conference, Contact:

#### TAFCON PROJECTS INDIA PVT. LTD.

923 & 923A, Devika Tower, 6 Nehru Place, New Delhi - 110019, India

Tel: +91-11-49857777 (50 Lines), Email: [metallurgy@tafcon.in](mailto:metallurgy@tafcon.in)

Website: [www.tafcon.in](http://www.tafcon.in)